

100 % SMART Ex Work

With every dry freight trailer S.BO STEEL is equipped with telematics TrailerConnect®.

All dry freight trailers are equipped with **TrailerConnect® telematics** as standard. You have immediate access to the **telematics** portal and the apps **beSmart and beUpToDate** from Schmitz Cargobull.

Your advantages are:

- **Efficient fleet management** with real-time information on the actual state of the fleet for your planning.
- **Intelligent dispatching** that optimizes tours and on-time delivery while avoiding empty runs.
- **Increased trailer availability** - proactive maintenance minimizes downtime and breakdown.
- **Reduction of process** costs for trailer utilization and personnel deployment.



Scan QR code for legend to symbols * Option

One-Stop Solution Premium Services from Schmitz Cargobull

Tailored financing solution and insurance sfrom the industry expert

Second-hand - first class certified-quality used trailerst

1,700 Service Partners - your specialist workshop for Full Service



TTrailerConnect® telematics for smart logistics and fleet management

Original spare parts available in 24h, order online with the EPOS portal

Full Service for Trailer, cooling unit and tyre

24h Cargobull Euroservice Europewide breakdown service



The Trailer Company.



Dry freight semi-trailer S.BO STEEL

The strongest dry freight trailer



Benefits at a Glance:

- Beaded steel super structure for intercontinental ferry-transport, protects the goods and minimizes the risk of theft
- Body heights with up to 3,000mm usable interior height for maximum load volume of over 101m³
- Interior equipment with double deck* and keyhole plate for maximum flexibility in load securing
- Extensive equipment for body and chassis thanks to the modular system
- Body strength certified according to DIN EN 12642 Code XL
- Robust, low-maintenance and durable design for low TCO (Total Cost of Ownership)
- 100 % SMART - Telematics TrailerConnect® CTU is standard ex works; hardware and basic service can be used immediately
- New generation galvanized, rolled MODULOS chassis - easy to maintain with 10-year warranty against rust-through
- ROTOS axle unit with 1,000,000 km or 6-year warranty (excluding wear parts)

Subject to change without notice. Illustrations partly with optional equipment. S.BO-STEEL-DEGB-10596-3622

* Option



Container Sea body for ferry traffic and to protect the goods against theft. The integrated heavy duty base rub rail, very robust for ferry traffic and against theft.



Steel end wall with plywood panel*: Protection for cargo and trailer.



Recessed keyhole plate combined with double-deck system* for horizontal beams, tension straps and clothes rails.



Robust lock system for the rear doors, 2 espagnolette locks per door.



Additional protection for light and brake connection ideal for unaccompanied ferry-traffic.



Extra reinforced underride protection skid* for mega tyres in conjunction with ferry-equipment.

S.BO STEEL

Versatile use

- Safety relevant freight
- Automotive components
- Clothes transport
- Dry cargo, general cargo



TrailerConnect® Telematic System

CTU hardware, activation and basic contract ex works included**



Internal height of superstructure up to 3,000 mm for 101 m³ Loading volume*



Robust steel construction

Beaded sidewalls for frequent ferry use

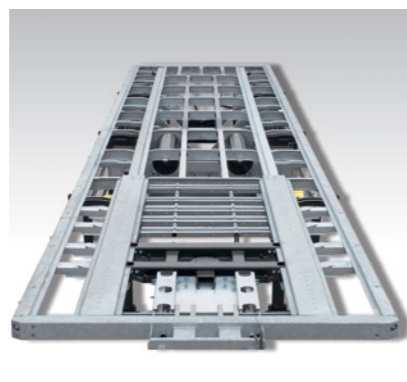
Telematics installed ex works

Fully galvanized chassis

ROTOS chassis: 1 million km or 6 years Warranty



Tour monitoring in real time thanks to TrailerConnect® telematics installed as standard.



Rolled MODULOS chassis: Corrosion-resistant and repair-friendly thanks to the bolted and hot-dip galvanized technology.



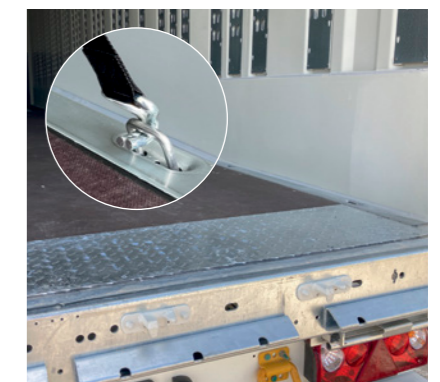
Combined transport: Ferry lashings* on the long girder for short-sea traffic.



ROTOS axle with reliable braking effect through 430mm discs with intelligent air cooling at the axle head.



Durable and robust screen-printed floor up to 8,000kg* forklift axle load according to DIN 283. Sealed floor plates prevent moisture from reaching the cargo from below. Recessed wear plate* protects the floor at the rear.



External steel frame with recessed 16 pairs of lashing eyes* to secure the load.

* Option ** Offer not available in all countries