

100% SMART ex works

The TrailerConnect® telematics system is on board every S.BO PACE dry freight trailer.



All S.BO dry freight trailers are equipped with TrailerConnect® telematics as standard. You have immediate access to the Schmitz Cargobull telematics portal and apps **beSmart** and **beUpToDate**.

Your benefits are:

- **Efficient fleet management** with real-time information on the current status of the fleet.
- **Intelligent dispatching** that optimizes tours and on-time delivery while avoiding empty runs.
- **Reduction of the process** costs for trailer utilization and personnel deployment.



Scan QR code for legend to symbols * Option

One-Stop Solution Premium-Services from Schmitz Cargobull



Tailored financing solutions and insurances from the industry expert



Second-hand - first class: certified-quality used trailers

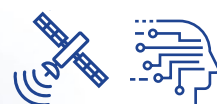


1,700 Service Partners - your specialist workshop for Full Service

Procurement

Valuation and sale

Usage



TrailerConnect® telematics system for smart logistics and fleet management

24h



Original spare parts in 24 hrs, order online with EPOS porta



Full Service for the trailer, cooling unit and tyres



24 hr Cargobull Euroservice Europe-wide -breakdown service

**SCHMITZ
CARGOBULL**

The Trailer Company.



Dry freight semi-trailer S.BO PACE

The new reference in courier, express and parcel services (CEP)



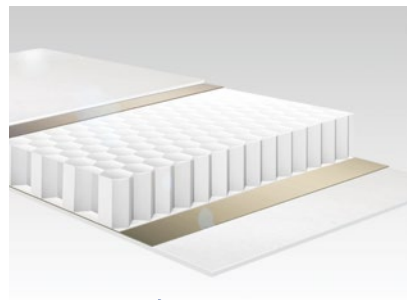
Benefits at a Glance:

- Innovative, sturdy lightweight body made of STRUKTOPLAST® for increased payload and CO2 emissions as well as reduced diesel consumption thanks to lower overall weight
- 2,710mm usable interior height for maximum loading volume of over 92 m³**
- Simplified load securing system with load-securing rails and lashing eyes*
- Optimal equipment for CEP services with 2 and 3 axles, roll-up door*, light roof and tail lift*.
- Long service life and stable value of the vehicle
- 100 % SMART - TrailerConnect® telematics is standard ex works. Hardware and basic service can be used immediately
- Galvanized, rolled MODULOS chassis of the new generation - generation - easy to maintain with 10-year warranty against rust-through
- ROTOS axle unit with 1,000,000km or 6-year warranty (excluding wear parts)

Subject to change without notice. Illustrations partly with optional equipment.

S.BO-FLY-DE/GB-10550-3622

* Option ** applies to Europe version



STRUKTOPLAST

Innovative STRUKTOPLAST® structure Up to 50% lighter than the classic Plywood design. Optimal for more payload or less diesel consumption.



Aluminum end wall with galvanized steel base scuff plate: protection for cargo and trailer



Robust heavy-duty base scuff plate to protect the sidewall and speed up the loading processes.



Attached load securing rails* for horizontal beams, tension belts and securing tarpaulin.



Light roof for CEP services: Continuous lighting with daylight.



Heavy duty corner protection* in combination with roller shutter* for fast access at the ramp and in distribution traffic

S.BO PACE

Versatile use

- CEP services
- Dry cargo general cargo

More volume maximum up to 108 m³

More payload: Tare weight*** from 5,600kg

New: stable Lightweight structure made of STRUKTOPLAST

In Europe interior height 2.710 mm available

In UK and Ireland three interior heights available:
2.610mm
2.810mm
3.210mm

Structure made of STRUKTOPLASTrobust lightweight

Two-wing rear portal with wide opening angle or roller shutter*

Rear coupling for EuroKombi / EcoDuo



TrailerConnect® Telematic System

CTU hardware, activation and basic contractex works included**

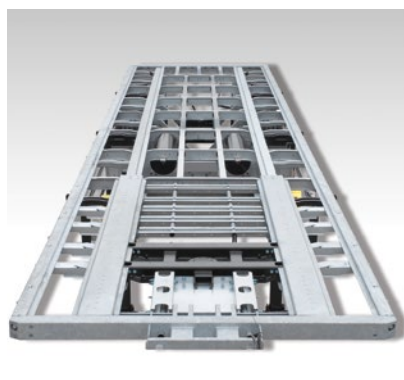


ROTOS chassis: 1 million km or 6 years warranty

Fully galvanized rolled chassis



Tour monitoring in real time thanks to TrailerConnect® telematics fitted as standard.



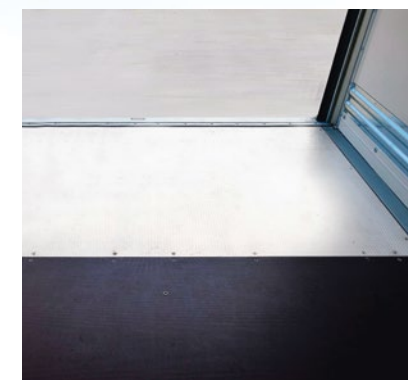
Rolled MODULOS chassis: Corrosion-resistant and repair-friendly thanks to the bolted and hot-dip galvanized technology.



Combined transport:** Ferry lashings on the long girder for short-sea traffic.



ROTOS axle with reliable braking effect through 430 mm discs with intelligent air cooling at the axle head.



Durable and robust screen-printed floor up to 8,000 kg* forklift axle load according to DIN 283. Sealed floor plates prevent moisture from reaching the cargo from below. Wear plate* protects the floor at the rear.



Under-ride tail lift* for distribution transport, loading and unloading without ramp.

* Option ** Offer not available in all countries *** Value depends on version and equipment

Representations may contain optional equipment