

New: 100 % SMART ex works

The TrailerConnect® telematics system is on board every S.KO PACE SMART semitrailer box.

All semi-trailers are equipped with TrailerConnect® telematics as standard, allowing immediate access to the Schmitz Cargobull telematics portal and apps **beSmart** and **beUpToDate**.

Your benefits include:

- **Intelligent scheduling** that optimises journeys and on-time delivery while avoiding empty runs.
- **Reduction of process costs** for trailer availability utilisation and staff deployment.
- **Efficient fleet management** with real-time information on the actual state of the fleet.
- **Higher trailer availability** – proactive maintenance minimises downtime and breakdown.



* Option



The Trailer Company.

One-Stop Solution Premium Services from Schmitz Cargobull



Box Body Semi-Trailer S.KO PACE SMART

The new product in courier, express and parcel services (CEP) in the UK



Benefits at a Glance:

- Innovative, stable lightweight body made of STRUKTOPLAST for more payload and less CO² emissions due to lower total weight.
- Galvanised, rolled MODULOS chassis of the new generation easy to maintain with 10-year warranty against rust-through.
- Three body heights with up to 3,200 mm usable internal height for maximum load volume of over 108 m³
- ROTOS axle unit with 1,000,000 km or six-year warranty (excluding wear parts).
- The STRUKTOPLAST structure reliably protects the goods.
- Optimum equipment for CEP services with roller shutter*, light roof* and tail lift*.
- 100 % SMART – TrailerConnect® telematics as standard ex works. Hardware and basic service can be used immediately.
- Engineered by Schmitz Cargobull & Built in the UK with proven components from the Schmitz Cargobull modular product system
- Simplified load securing with load securing rails.*

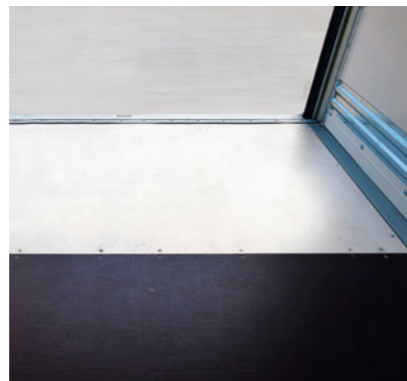
We reserve the right to make changes. Some illustrations show special equipment.

S.KO-FLY-DEGB-10420-4121

* Option



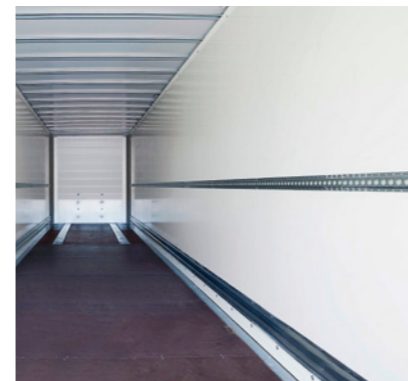
Innovative STRUKTOPLAST body reduces dead weight with strong, age-resistant lightweight panels for optimum payload.



Durable and plywood floor - Sealed base plates prevent moisture from reaching the cargo. Wear plate* protects the floor at the rear.



Aluminium bulkhead and Steel kickstrip: protection for cargo and trailer.



Surface mounted load securing rail for horizontal securing beams and tension belts.



Light roof* for CEP services: translucent to allow day light to pass through.



Under-ride tail lift* for loading and unloading without ramp.

S.KO PACE SMART

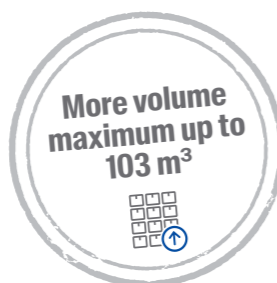
Versatile use

- CEP services
- Fresh goods (without refrigeration)
- General cargo
- Security-relevant freight



TrailerConnect® Telematics System

CTU hardware, activation and basic contract included ex works**.



Three interior heights available:
2,600 mm
2,800 mm
3,200 mm

Structure made of robust and lightweight STRUKTOPLAST

Double-leaf rear portal with wide-opening angle



Maximum internal height for over 108 m³ cargo volume

ROTOS chassis: 1 million km warranty

Fully galvanised rolled chassis

Underride protection according to ECE 58.03



ROTOS axle with reliable bracking effectivity due to 21" discs with intelligent air cooling at the axle head.



Rolled MODULOS chassis: Corrosion-resistant and easy-to-repair thanks to the bolted and hot-dip galvanised technology.



Combined transport: Ferry Lashings* for short-sea transport. For more safety - underride protection according to ECE regulation 58.03.



Double leaf doors corrosion-resistant, durable and lightweight. Opened with an opening angle of 270°. Close-fitting to the side wall for good maneuverability.



Roller shutter* for fast loading cycles, quick access at the ramp and in tight spaces.



Real-time journey monitoring with TrailerConnect® telematics fitted as standard.