



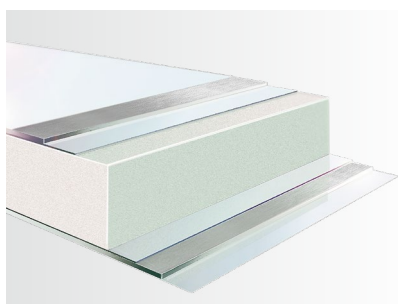
The M.KO COOL/Z.KO COOL – Through-loading train

The flexible and efficient through-loading train

Are you looking for a practical and time-saving solution for food transport? The M.KO COOL/Z.KO COOL high-volume through-loading train protects the temperature-controlled freight and fulfils all transport tasks flexibly and conveniently – without coupling and uncoupling.

Why is the M.KO COOL/ Z.KO COOL the best solution for you?

The motorised box body M.KO COOL can be loaded and unloaded directly via the central axle trailer Z.KO COOL using a forklift. This saves time and space, as the ramp only has to be approached once with the high-volume through-loading train and the trailer does not have to be parked in between.



Excellent insulation for temperature-controlled freight thanks to FERROPLAST® bodies



With ATP-FRC certified bodies, you are demonstrably safe when travelling. Numerous configurations are possible for MultiTemp operation, including fixed and variable fixtures and sliding partition walls made of vapour diffusion-tight FERROPLAST®.



The efficient and convenient transport solution

Faster unloading for large amounts of freight, without coupling manoeuvres, without additional loss of time. In the optimum configuration, up to 37 Euro pallets can be transported on one level. Weight-optimised, maintenance- and repair-friendly design with a weight advantage of up to 60kg.



Numerous configurations with fixed and variable fixtures

Equipment for customising the interior: e.g. fold-out tunnel, roller blind over the gangway, drive-over bridge, gangway in the through-loading draw and many more.

The M.KO COOL/ Z.KO COOL: Efficient, flexible, easy through-loading.

Cooling expertise from a single source and equipment packages that are perfectly harmonised: Thanks to the various configuration options, you will find exactly the solution that suits your transport requirements.



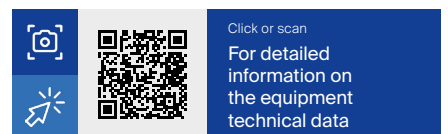
Brand-name cooling units from leading manufacturers on the front wall or in underfloor design.



Additional ceiling evaporator* for MultiTemp versions and trailers in through-loading trains.



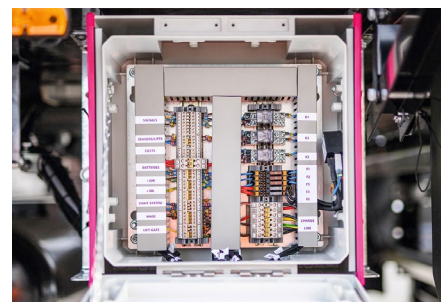
Sliding partition wall* made of vapour diffusion-tight **FERROPLAST®**: Fast, variable MultiTemp partitioning; optionally available for 1/3 and 2/3 partitioning or as a continuous wall.



The reversing camera* and **LED work lights*** ensure additional safety and prevent damage when reversing, docking on ramps and manoeuvring.



Multifunctional floor* with optimised slip resistance, simple load securing when fixing vertical telescopic beams and hygienic cleaning.



Central electric box that ensures easy diagnosis and maintenance of the systems.

Temperature-controlled transport – customised and well thought-out.

As a strong partner for your success, we provide you with transport solutions and services you can rely on, for greater economy, efficiency and transparency in your fleet and along the supply chain.



Ex works in every
M.KO COOL/Z.KO COOL

TrailerConnect® telematics provides you with real-time data for greater transparency and efficiency in your fleet and supply chain. In the **TrailerConnect® portal**, you can manage all your fleet's telematics data centrally – across all manufacturers – on one platform.

The **TrailerConnect® tyre pressure monitoring system** with **autolocation** assigns the integrated sensor to the correct tyre position in each case. The sensor learns independently and records tyre pressure and tyre temperature data.

This means efficient fleet management, intelligent scheduling, higher trailer availability and effective processes.



You can rely on:

The Schmitz Cargobull premium services and the competent partner network.

