

100% SMART Ex Works

The TrailerConnect® telematics system is on board every S.BO EXPRESS dry freight trailer.

All S.BO dry freight trailers are equipped with **TrailerConnect®** telematics as standard. You have immediate access to the **telematics portal** and the apps **beSmart** and **beUpToDate** from Schmitz Cargobull.

Your benefits are:

- **Efficient fleet management** with real-time information on the current state of the fleet for your planning.
- **Smart scheduling** that optimises routes and on-time deliveries, while also avoiding empty runs.
- **Increased trailer availability** - proactive maintenance minimizes downtime and breakdown.
- **Reduction of process costs** for trailer utilization and personnel deployment.



SMART
TrailerConnect®
INSIDE

**SCHMITZ
CARGOBULL**

The Trailer Company.

One-Stop Solution Premium Services from Schmitz Cargobull



S.BO EXPRESS dry freight semi-trailer

The benchmark for dry freight semi-trailers

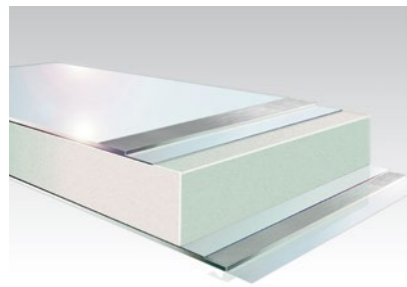
SMART
TrailerConnect®
INSIDE

Benefits at a Glance:

- FERROPLAST® structure reliably protects the goods from the weather and minimizes the risk of theft
- Body heights with up to 3,200 mm usable interior height for maximum load volume of over 108 m³
- Damage-free transport of the cargo due to smooth surfaces inside the vehicle - the rails for load securing and the double deck system* are recessed flush with the surface
- Extensive equipment for body and chassis thanks to the modular system
- Body strength certified according to DIN EN 12642 Code XL
- 100% SMART - Telematics TrailerConnect® CTU is standard ex works; hardware and basic service can be used immediately
- New generation galvanized, rolled MODULOS chassis - easy to maintain with a 10-year warranty against rust.
- ROTOS axle unit with 1.000.000 km or 6 years warranty (except wear parts)

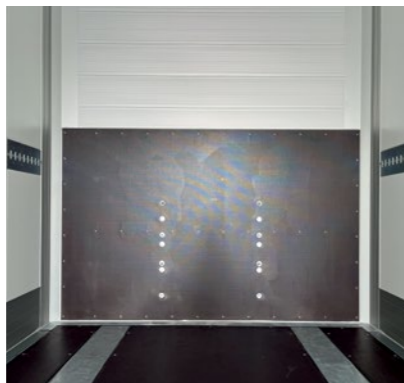
Subject to change without notice. Illustrations partly with optional equipment.

S.BO-FLY-DE/GB-10548-3222



FERROPLAST

FERROPLAST®: Patented thermotechnology with vapor-diffusion-tight metal cover layers to protect the goods



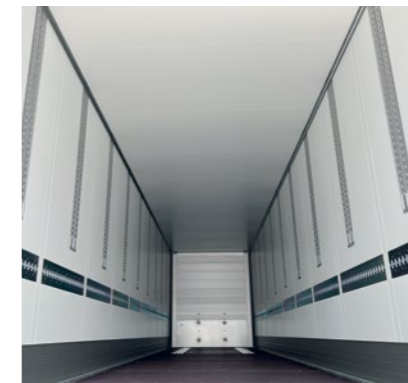
Aluminium front wall with laminated wood panel*: Protection for cargo and trailer.



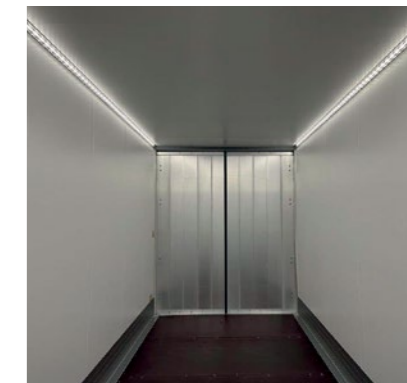
Flush load securing rails* for horizontal beams, tensioning straps and securing tarpaulin.



Double-deck system for use as load securing (TÜV-certified): a total of 67 pallet spaces.



FERROPLAST® roof suitable for goods that need to be protected from light.



Extra bright LED interior lighting in full body length on one or both sides.*

S.BO EXPRESS

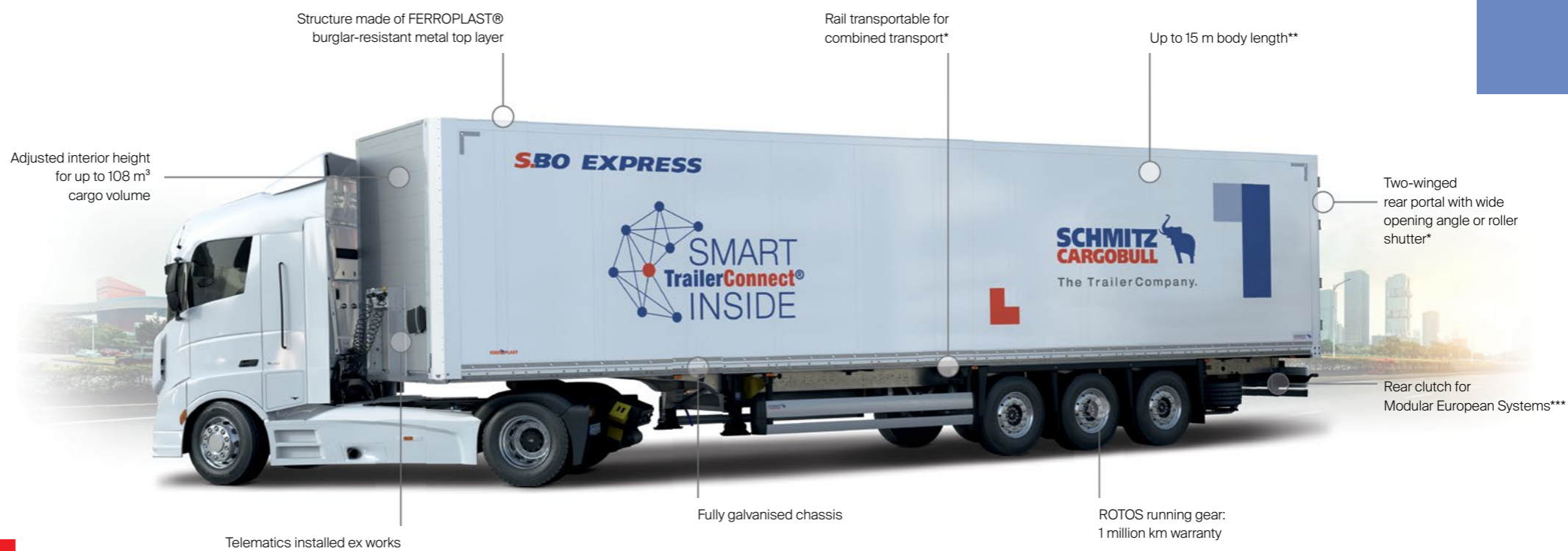
Versatile

- Safety-relevant cargo
- Moisture-sensitive goods
- IT and electronic devices
- Tobacco products
- Event and concert equipment
- Dangerous loads according to ADR EXII and EXIII
- Dry freight general cargo



TrailerConnect® Telematic System

CTU hardware, activation and basic contractex works included**



Structure made of FERROPLAST® burglar-resistant metal top layer

Rail transportable for combined transport*

Up to 15 m body length**

Adjusted interior height for up to 108 m³ cargo volume

Two-winged rear portal with wide opening angle or roller shutter*

Rear clutch for Modular European Systems***

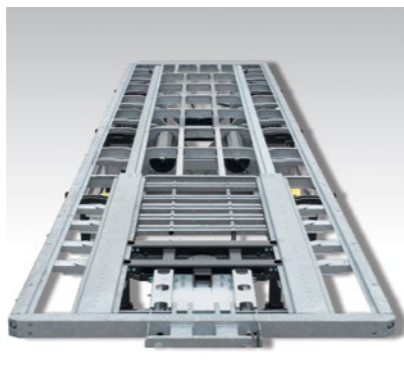
Telematics installed ex works

Fully galvanised chassis

ROTOS running gear: 1 million km warranty



Tour monitoring in real time thanks to TrailerConnect® telematics installed as standard.



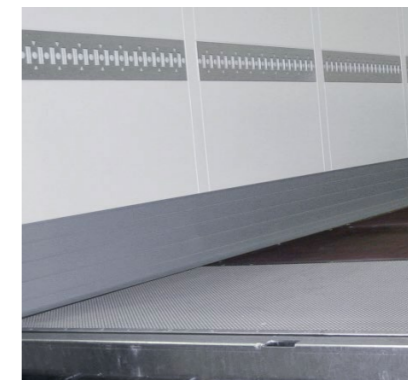
Rolled MODULOS chassis: Corrosion resistant and repair friendly thanks to the bolted and hot-dip galvanized technology.



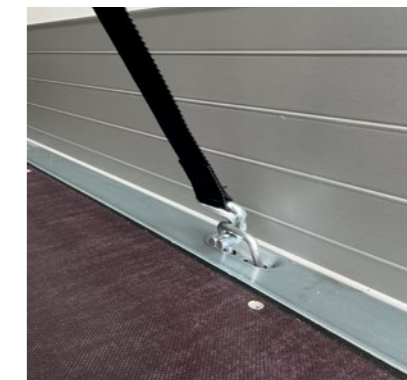
Combined transport: ferry lashings on the I-beams for short-distance sea transport.



ROTOS axle with reliable braking effect through 430 mm discs with intelligent air cooling at the axle head.



Durable and robust screen-printed floor up to 8,000 kg* forklift axle load according to DIN 283. Sealed floor plates prevent moisture from reaching the cargo from below. Recessed wear plate* protects the floor at the rear.



External steel frame with 16 pairs of recessed lashing eyes for load securing.

* Option ** Offer not available in all countries *** For EuroCombi / EcoDuo operation