

Technical Data

Swap Bodies W.BO



Model	W.BO 7.45 S	W.BO 7.45 G	W.BO 7.82 G
Lenght	7,450 mm	7,450 mm	7,820 mm
Width	2,550 mm	2,550 mm	2,550 mm
Height	2,750 mm	2,750 mm	2,750 mm
Codification profile	C 30	C 30	C 30
Lenght in clear measure	7,290 mm	7,310 mm	7,680 mm
Width in clear measure	2,470 mm	2,470 mm	2,470 mm
Height in clear measure	2,517 mm	2,517 mm	2,517 mm
Total weight	16,000 kg	16,000 kg	16,000 kg
Unladen weight	ca. 3,200 kg	ca. 3,200 kg	ca. 3,450 kg
Payload	12,800 kg	12,800 kg	12,550 kg
Installation height	1,320 mm	1,320 mm	1,320 mm

All from one source

Premium services from Schmitz Cargobull



SCHMITZ
CARGOBULL

The Trailer Company.



Swap Bodies W.BO

Robust and durable in freight transport

The benefits at a glance:

- Robust, low-maintenance and durable design for low TCO (Total Cost of Ownership)
- High availability and minimal maintenance requirements
- Simple and safe handling saves time with high changeover frequency
- Gripping edges for easy handling by cranes and forklifts
- Shorter journey times and more efficient utilisation of the vehicle fleet
- Telescopic support legs* for flexible parking heights
- Numerous equipment options for every application

Subject to change without notice. Illustrations partly with optional equipment.

W.BO-FLY-DEGB-10367-3521



Detached Swap Body W.BO in robust steel construction with rail-compatible roller shutter*. The swap body is ideal for use in CEP transport, encounter and freight transport.



Double folding door with robust, external espagnolette locks. When open, the doors are secured with a chain.



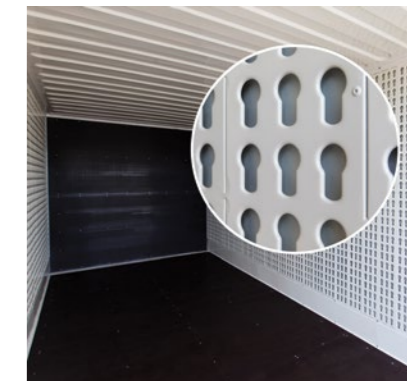
Smooth front and side walls for individual labelling. For freight rail transport, the W.BO interchangeable boxes are equipped with gripping edges.



Open roller shutter* in interchangeable case for fast loading cycles, quick access at the ramp and in confined spaces.



Opened double wing door with an opening angle of 270°. Close-fitting to the side wall for good manoeuvrability.



Interior fittings in sheet steel with keyhole plate for locking and clothes rails.

The product range

- **W.BO 7.82 G**

with smooth sidewalls for better aerodynamics at high average speeds

- **W.BO 7.45 G**

with smooth side walls - lower fuel costs due to low air resistance

- **W.BO 7.45 S**

with beaded side walls - the cost-optimised alternative for frequent railway use (without illustration)



Support leg 90° in transport position with safety catch.



Adjusting the telescopic support leg* for the semi-mounting heights of 1,120 mm, 1,220 mm and 1,320 mm.



Four support legs with diagonal securing according to DIN EN 284 (as standard version with fixed fifth wheel height of 1,320 mm). Four receptacles for securing with twist locks according to coding profile C30.



Galvanised steel folding ladder for access to the load compartment.



Document tube* for accompanying documents mounted on the underside of the rear.



Stable and robust base for high loads and frequent changes.

*optional