



TrailerConnect® Data Management Center and TrailerConnect® TourTrack

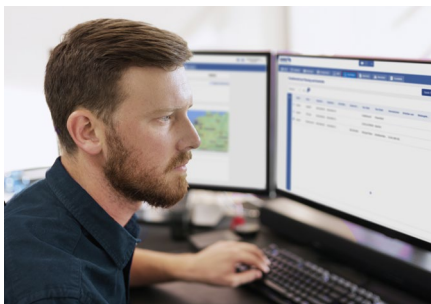
Transparency and secure collaboration

Would you like to have an overview of your fleet, be able to selectively choose which data you share within your network and, at the same time, retain full data sovereignty? With the TrailerConnect® Data Management Center in combination with TrailerConnect® TourTrack, this is easy to implement.



From the road to the cloud.

Telematics data is essential for efficient transport and logistics processes. The TrailerConnect® platform enables collaboration in a protected network for increased transparency along the supply chain.



Consolidation platform

for numerous telematics data streams

You use the **TrailerConnect® portal** as a platform for data integration, live tracking & trailer services and gain access to all relevant telematics data.



Forwarding network

at a glance

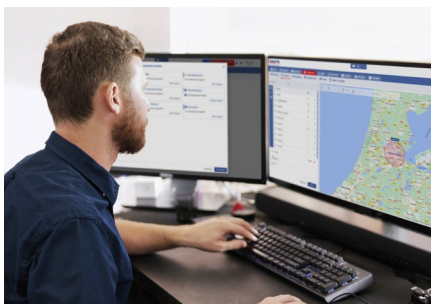
With the **TrailerConnect® Data Management Center**, you create a link to partners and sub-forwarders and gain a centralised view of your transport network.



Selective data exchange

with external systems

With just a few clicks, the **TrailerConnect® Data Management Center** enables the sharing of selected data and the connection of external telematics systems via numerous interfaces.



Efficient management and transparent logistics processes

With **TrailerConnect® TourTrack**, you can keep track of order-related transports and react to deviations in real time. You can share data at order and consignment level and retain control of your data.

You decide when and with whom you share which data.

The TrailerConnect® Data Management Center works like a filter between your transport data and third-party providers, such as real-time visibility platforms (RTV). You decide which data you pass on to others.

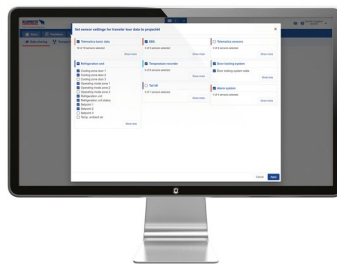


The TrailerConnect® Data Management Center is your point of contact for setting up and managing all incoming and outgoing data connections. Monitor and control the data in one central location.



Simple link with supply chain

Seamless interface connections to freight exchanges, transport management systems and real-time visibility platforms enable simple data import and export as well as visualisation of your own forwarding network.



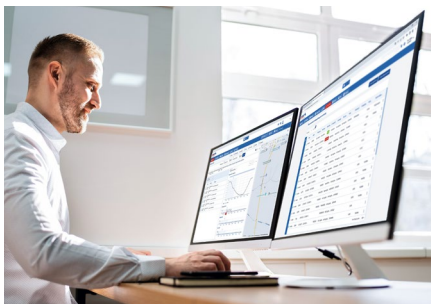
Full control and targeted selection of your data

You manage the data sharing yourself and decide which data should be shared. Thanks to the selection options only order-relevant data to third parties will be passed on.



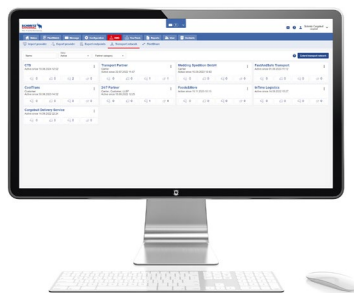
More transparency and clarity

Within the supply chain, each partner receives the information they need to fulfil the transport task. You retain full control and transparency over the telematics data records - when importing and exporting data.



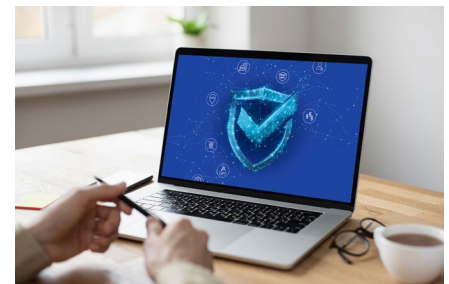
Reduced communication effort

Share tracking data automatically and securely with just a few clicks.



Protection of your own transport network

Business-sensitive data about your own transport network and the subcontractors involved are comprehensively protected.



Secure data management

The platform complies with the current GDPR guidelines and is certified in accordance with the strict ISO standards ISO 9001, ISO 27001 and TISAX.

Quick and easy tour overview and real-time tracking.

You immediately receive a detailed overview of the status of your transport orders and consignments as well as those of your network partners. Deviations or delays in the routes are displayed immediately.

Intuitive user interface

For simple tour planning and monitoring

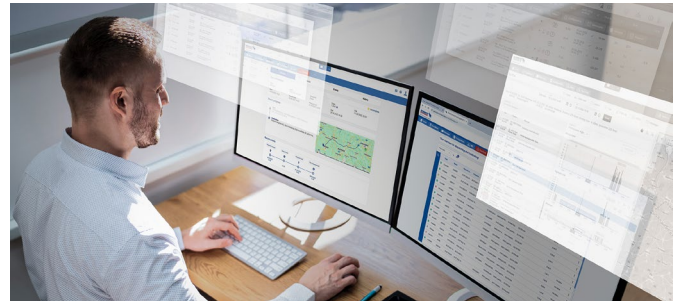
Thanks to simple operation and configurable dashboards, you can keep an eye on your orders everywhere, share transport data and generate reports automatically. Tours can be integrated and managed with your transport management system (TMS).



Controlled data exchange

For more transparency in the supply chain

You can decide at any time with who and when you share order-related transport data. By providing data, you create transparency in the supply chain and enable targeted track & trace including seamless reporting.



You can rely on:

The Schmitz Cargobull premium services and the competent partner network.

- Customised financing and insurance from industry professionals
- TrailerConnect® Telematics and Digital Services for Smart Logistics
- Second Hand – First Class Used in tested quality
- Spare parts that pay off, for the time value fair repair
- Full Service for trailer, cooling unit and tyres
- Order Genuine Spare Parts online, delivery within 24h
- 1,400 Service Partners - your specialist workshop network
- 24h Cargobull Euroservice assistance across Europe

Click or scan
Find out more about our exclusive services here.

Do you have any further questions for us?
We are happy to advise you!

T +49 (2558) 81-0
www.cargobull.com