

100-% SMART ex works

With every S.KO CITY semitrailer box telematics TrailerConnect® is on board.

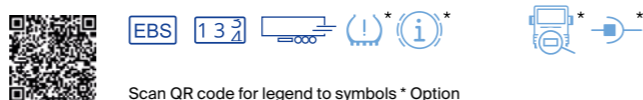


All S.KO semitrailers are equipped with **TrailerConnect® telematics** as standard. You have immediate access to the Schmitz Cargobull **telematics portal** and apps **beSmart** as well as **beUpToDate**.



Your advantages are:

- **Intelligent dispatching** that optimizes tours and on-time delivery while avoiding empty runs.
- **Reduction of process costs** for trailer availability, capacity utilization and personnel deployment.
- **Efficient fleet management** with real-time information on the actual state of the fleet.
- **Higher trailer availability** - proactive maintenance minimizes downtime and breakdown.



One-Stop Solution

Premium-Services from Schmitz Cargobull



Box body semi-trailer S.KO CITY

Manoeuvrable, efficient and quiet in distribution traffic



The advantages at a glance:

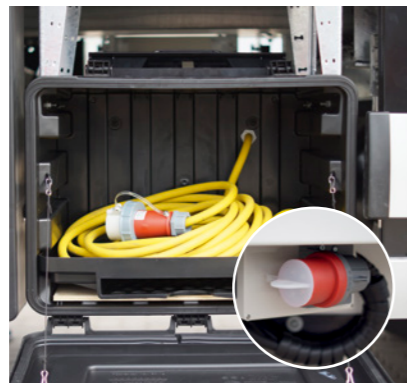
- City logistics equipment with tail lift for efficient transport in distribution traffic
- Steering axle with mechanical forced steering for more manoeuvrability and less tyre wear
- Electric cooling unit and aluminium airline floor* for reduced noise and CO2 emissions - ideal for deliveries in residential areas and zero-emission zones
- Telematics TrailerConnect® standard from factory for optimal vehicle utilization, availability and low operating costs .
- For vehicles with gross weights from 22 t to 36 t: Available in four lengths and three axle combinations
- Vapour diffusion-tight, aging-resistant and splinter-proof box body made of FERROPLAST®.
- ROTOS chassis with standard safety equipment
- Liquid-tight welded floor pan for time-saving cleaning
- Simplified load-securing with vertical and horizontal securing beams

Subject to change without notice. Illustrations partly with optional equipment. S.KO-CITY-FLY-DEGB-10552-3222

* Option



S.CUe electric cooling unit from Schmitz Cargobull allows driving in zero-emission zones. Power is supplied via the coupled tractor unit or CEE connection.



Charging cable in the toolbox to supply the S.CU electric chiller via CEE connection.



Tail lift* as rear closure. A two-wing tailgate with folded-forward or retractable tail lift* is standard.



Hinged circulation wall for easy cleaning. Box spacer profiles for optimum air circulation.



Sensor-monitored interior temperature* as well as **temperature printer*** as a cost-efficient addition to the factory-fitted digital temperature recorder.



Interior control panel for light switches* and **OptiLevel height adjustment*** for ramp adjustment during loading and unloading.

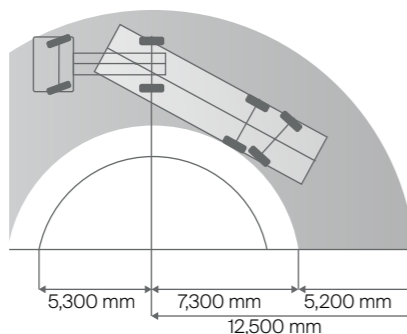
S.KO CITY

Wide range of body configurations

- In four lengths from 9,000mm to 13,410mm body length
- With 1-, 2- or 3-axle chassis combinations with mechanical forced steering of the last axle
- For total weights from 22,000kg to 36,000kg



Up to 36 pallet spaces: Seven body-axle combinations for the optimum combination of payload and manoeuvrability in city applications.



Safe manoeuvring and more efficient on the road: Forced-steer axles prevent tyre rubbing in corners, reduce the turning circle required, and simplify manoeuvring in tight conditions.

TrailerConnect® Telematics System
CTU hardware, activation and Basic contract included ex works**



FERROPLAST
High-strength structure made of FERROPLAST®

Rear view camera* and LED worklights*

tail lift* from Brand manufacturers

Control panel* in outer wall for tail lift

Forced steering on the saddle plate

Auxiliary support system* for safe loading in the unhitched trailer

RODOS running gear with lift* and steering axle: 1 million km or 6 years warranty

Foldable Ascent

Compression roller bumper*

LED working lights* right and left (2 pcs.) and LED reversing lights (2 pcs.)



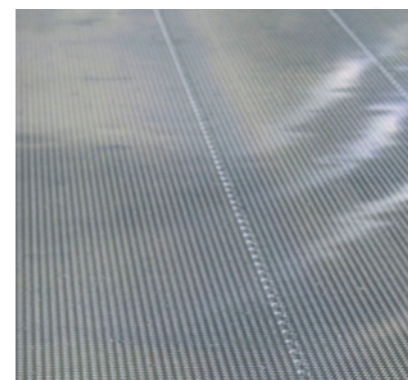
Full-length vertical telescopic beams* easily and quickly fixed in the airline floor to secure the load. High rub rails protect the interior.



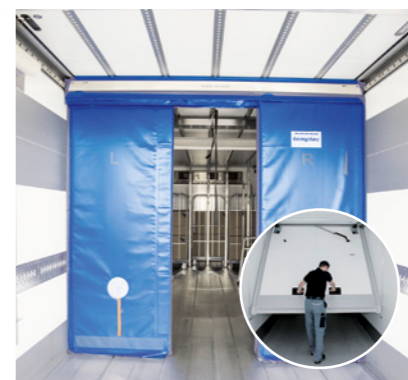
Horizontal load-securing beams for securing pallets and mesh baskets in rows. Flush installation of the bars prevents damage to goods and interior.



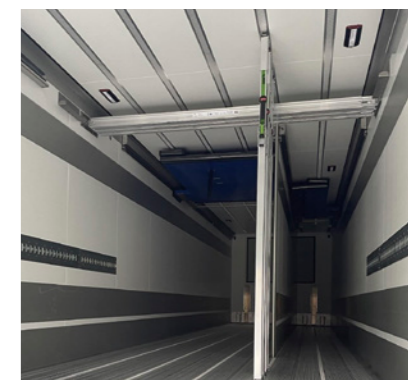
Magazines* for vertical and horizontal load-securing beams in the rear and under the ceiling simplify handling, fast load-securing and ensure safe transport.



Airline floor* with optimized slip resistance and perforated strip for load securing: welded floor pan meets hygiene regulations, is quick to clean and saves time.



MultiTemp transports with pivoting partitions* that can be moved along the entire length of the interior. Either made of flexible thermocouples or as a fixed element made of FERROPLAST®.



Flexible room layouts with vertical partitions* and divisible temperature zones with optional side door* for fast, direct partial unloading. Can be combined with temperature curtains at the rear, e.g. with air blowers.