

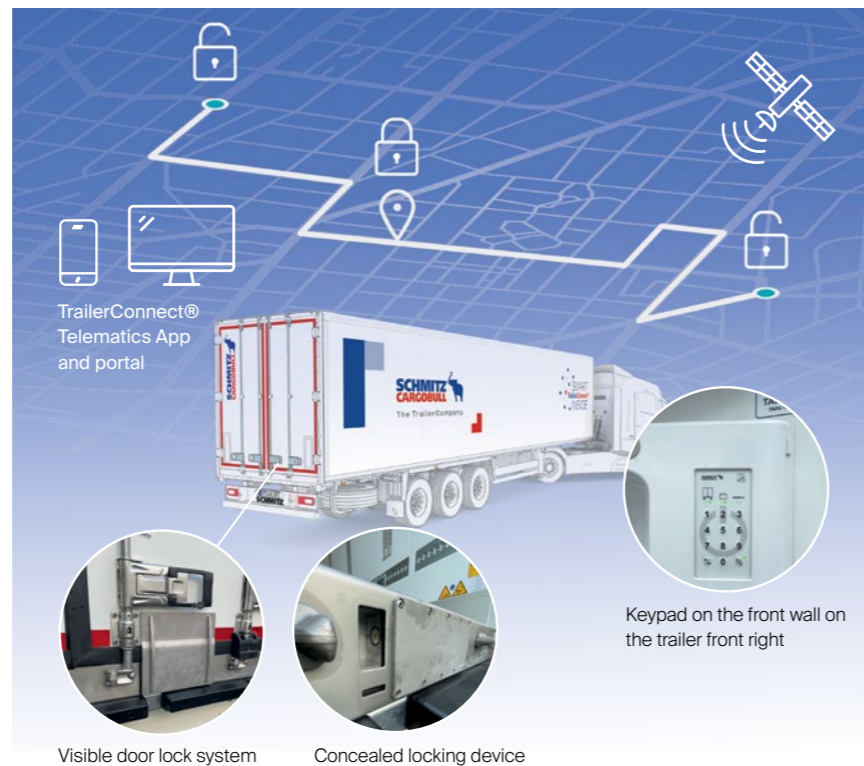
## More safety for the cargo

### Protection against unauthorized opening of the trailer

The TL4\* electronic door locking system prevents unauthorized access to the trailer and theft of goods. Connected to TrailerConnect® Telematics, rights for locking and unlocking the rear doors can be defined in the portal.

Locking and unlocking is done by entering a PIN via the beSmart app, the TrailerConnect® telematics portal or - directly on the vehicle - via the keypad or display of the Schmitz Cargobull refrigeration unit.

The TL4\* door locking system can also be controlled fully automatically with TrailerConnect® Telematics. Start and target zones (geofences) in which the rear doors are automatically unlocked or locked are defined in the portal.



\* Option.

## One-Stop Solution Premium-Services from Schmitz Cargobull



**SCHMITZ  
CARGOBULL**   
The Trailer Company.



## S.KO COOL Reefer Semi-trailer

### Safe Transport of Temperature-Controlled Freight



### The Benefits at a Glance:

- cooling expertise from a single source - trailer with FERROPLAST® body, S.CU cooling unit, TrailerConnect® telematics perfectly matched to each other and supplemented with comprehensive full service benefits
- Vapor diffusion-tight FERROPLAST® body with uniquely efficient insulation performance
- Telematics TrailerConnect® on board ex works for more sustainability, safety and predictability in transportation
- Secure door-locking system protects the goods from unauthorized access
- Efficient air distribution system for uniform temperature control in the interior. Robust connection to the S.CU cooling unit.
- Convenient temperature printer as a supplement to the standard digital temperature recorder
- MultiTemp equipment and optional double-deck system for flexible scheduling and higher capacity utilization
- Liquid-tight welded floor pan and flush-mounted internals for easy cleaning
- Market-leading box truck concept with low Total Cost of Ownership (TCO)

\* Option





**Reliable transport refrigeration machine S.CU** in three versions for every application - with very precise temperature control, particularly economical in partial load operation.



**Compact, powerful ceiling additional evaporator\*** for dual chamber operation.



**Easy-to-operate temperature printer\*** on the front wall as a cost-efficient to the factory-fitted digital temperature recorder.



**Robust air ducting system** for uniform air circulation in the trailer, prevents the backflow of warm air and is easy to clean.



**MultiTemp transports** with swiveling partition\* made of FERROPLAST®.



**Certified for pharmaceutical transport\*** with additional equipment **TAPA TSR1-capable\***.

## S.KO COOL Reefer Semi-Trailer

With additional equipment for safety transports according to the highest TAPA TSR1 standards

- TL4\* door locking system
- PIN-secured immobilizer\*/\*\*\* and acoustic alarm system\*
- Burglar alarm system\*/\*\*\* integrated in the bodywork
- Status and control of components also in the TrailerConnect® telematics portal
- Transfer of data to service provider for active TAPA monitoring

**TAPA = Transported Asset Protection Association**



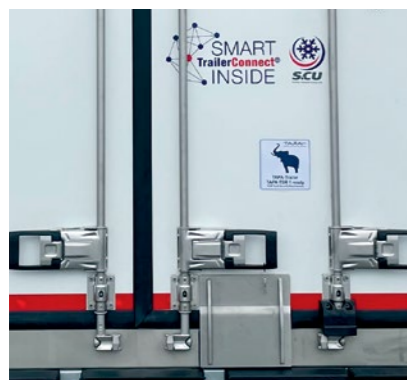
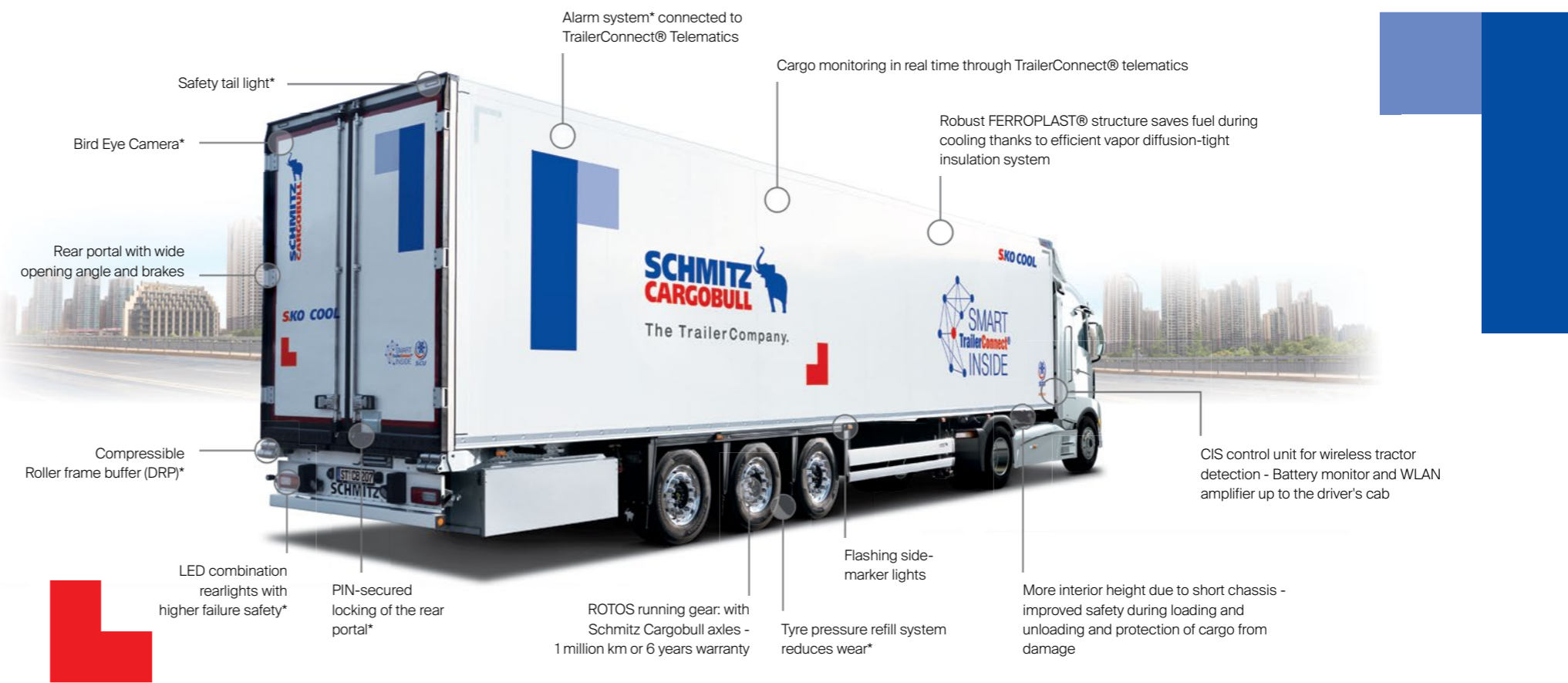
### Telematics TrailerConnect®

CTU Pro hardware and basic contract ex works included\*\*



### Cooling competence

Everything is optimally coordinated: S.CU cooling unit, FERROPLAST® body and TrailerConnect® telematics.



**The TL4\* secure door locking system** for reliable protection of the goods against unauthorized access.



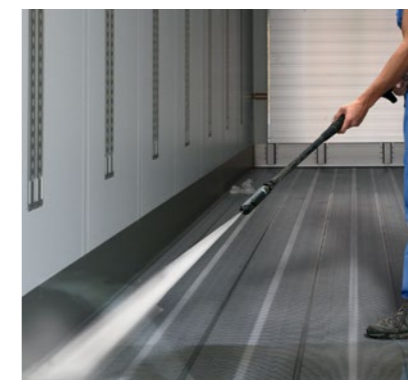
**With the BeSmart app**, the driver always has an overview of the trailer's condition and can react quickly if necessary.



**Load-securing rail** allows free positioning of the load-securing beams along the entire length.



**Vertical telescopic beams\*** simply and quickly in the multifunctional floor for load secured.



**Fast cleaning of the multifunctional floor\*** with optimized slip resistance: the welded floor pan saves time and complies with hygiene regulations.



**Compressible roller ramp buffer (DRP)\*.** With repair-friendly, modular design, it protects the rear end when approaching the ramp.

\* Option. \*\* Offer not available in all countries. \*\*\* Not necessary for TAPA TSR1 certification.