



The tipper semi-trailer S.KI LIGHT

# The robust, lightweight solution for the construction industry

Are you looking for a lightweight transport solution for continuous use on construction sites? The tipper semi-trailer S.KI LIGHT with its low tare weight is a payload-optimised means of transport thanks to its lightweight aluminium box body. The body stability is maintained despite the lightweight design.

# What makes the S.KI LIGHT the perfect solution?

The S.KI tipper trailer is impressive with its stable lightweight design and is the payload-optimised alternative to the rounded steel tipper. The higher payload enables cost-effective transportation for less abrasive loads in the construction site segment.



The light and reliable answer to all the challenges of construction site transport.

The aluminium box construction enables a higher payload due to the low unladen weight of the vehicle. The tipping stability and structural stability are guaranteed by the weight-optimised steel chassis frame.



A safe means of transport for fine-grained material with an excellent operating cost balance.

The areas of application for the S.KI LIGHT are diverse: depending on the intended use, there are different floor plate thicknesses for the aluminium box body as well as individual rear wall solutions and body covers.



Durability as standard.

So that you can always travel safely and with confidence: Chassis warranty of 500,000 km or 3 years (wearing parts removed) and a 10-year warranty against rusting through on the galvanised frame.

Stable lightweight construction, more payload, simply unshakeable.

Quality is the top priority for all components that we install in the tipper semi-trailer S.KI. Our aim is maximum durability and robustness as well as customisability for the right purpose.



The surface-mounted **swing flap** is suitable for partial unloading and is optionally available with a slider. The combination door with swing and door function or swing flap with chute extend the range.





The **sliding roof**\* enables time-saving opening and closing. Available in a manual or electric version, operated by remote control.

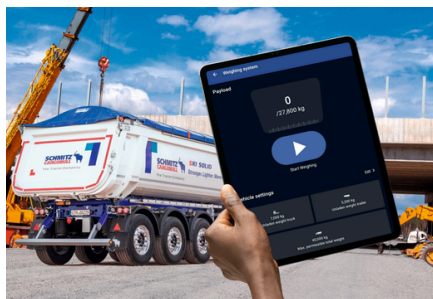


The **plastic lining**\* protects against wear, offers good sliding properties and reduces the risk of freezing.



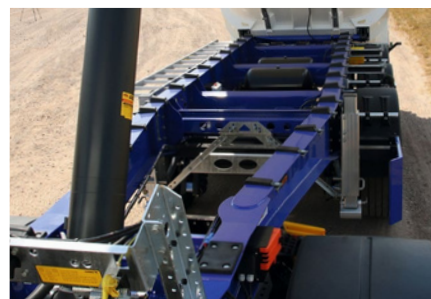
Click or scan  
For detailed  
information on  
equipment and  
technical data



The factory-calibrated **on-board weighing system**\* is ready for use in 5 seconds and can be operated via the screen or beSmart app. A stationary checkweigher does not need to be approached, the weighing data is available immediately.



The **folding underide guard** with high ground clearance enables use on road pavers and can be operated manually, optionally available with a spring mechanism for easy handling or in a pneumatic version for increased safety and time savings.



The **torsion-resistant steel chassis** with improved corrosion protection in a painted or galvanised finish ensures the best possible value retention.

\* optional

# Unshakeable transport solutions – customised and well thought out.

As a strong partner for your success, we provide you with transport solutions and services that you can rely on, for greater cost-effectiveness, efficiency and transparency in your fleet and along the supply chain.



**TrailerConnect® telematics** provides you with real-time data for greater transparency and efficiency in your fleet and supply chain. In the **TrailerConnect® portal**, you can manage all your fleet's telematics data centrally – across all manufacturers – on one platform.

The optional **on-board weighing system** allows you to determine and document the payload at the loading point.

The TrailerConnect® **tyre pressure monitoring system** with autolocation assigns the integrated sensor to the correct tyre position in each case.

The sensor learns independently and records tyre pressure and tyre temperature data.

This means efficient fleet management, intelligent scheduling, higher trailer availability and effective processes.

## Service contracts

Increase your uptime, create cost transparency and reduce your workload with **service contracts\*** for trailers and tyres.

You can rely on:

## The Schmitz Cargobull Premium services and the competent partner network.

- Customised financing and insurance from industry professionals
- Second Hand – First Class Used in tested quality
- TrailerConnect® telematic and digital services for smart logistics
- Spare parts that pay off, for repairs in line with the current value
- Full service for trailer, cooling unit and tyres
- Order Genuine Spare Parts online, delivery within 24h
- 1,400 Service Partners - your specialist workshop network
- 24h Cargobull Euroservice assistance across Europe

Click or Scan

Find out more about our exclusive services here

Do you have any further questions for us? We are happy to advise you!

T +49 (2558) 81-0  
[www.cargobull.com](http://www.cargobull.com)

\*All expandable with the Smart Service Package for digital services or modules, e.g. „National Service“.