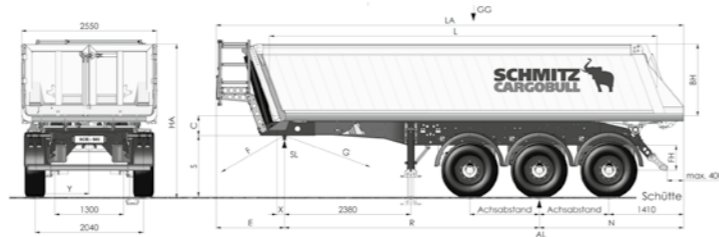


Technical Specifications

S.KI 24 SL 7.2 Aluminium Box Body



Weights	permitted	technical							
Total permissible weight (GG)	36,000 kg	39,000 kg	Overall height, unladen, tipped, without roof cover (HK)	7,980 mm	8,120 mm	8,260 mm	8,400 mm		
Axle load (AL)	24,000 kg	27,000 kg	Front swing radius, body only (F)	1,370 mm	1,395 mm	1,420 mm	1,470 mm		
Fifth wheel load (SL)	11,000 kg	12,000 kg	Front swing radius with roller tarpaulin and platform (F)	1,620 mm	1,620 mm	1,620 mm	1,695 mm		
Tyres	385/65 R 22.5"		Front swing radius with sliding tarpaulin (F)	1,730 mm	1,770 mm	1,800 mm	1,870 mm		
Dimensions	Laden	Unladen							
Semi-trailer height – min. recommendation to max. permissible (S)	1,270 – 1,390 mm	1,300 – 1,420 mm	Rear swing radius to ISO 1726 without spare wheel (G)	2,300 mm	2,300 mm	2,300 mm	2,300 mm		
Semi-trailer height – semi-trailer horizontal (S)	1,290 mm	1,320 mm	Rear swing radius to ISO 1726 with spare wheel (G)	2,120 mm	2,120 mm	2,120 mm	2,120 mm		
Axle spacing	1,210 mm	1,310 mm							
Wheelbase (R)	4,900 mm	4,800 mm	Internal length with chute (L)	7,300 mm	7,300 mm	7,300 mm	7,300 mm		
Rear overhang with chute (N)	2,620 mm	2,720 mm	Internal length with external pendulum tailgate 20° (L)	7,500 mm	7,500 mm	7,500 mm	7,500 mm		
Rear overhang with external pendulum tailgate (N)	2,610 mm	2,710 mm	Internal length with external pendulum tailgate 90° (L)				7,750 mm		
Rear overhang with combi-door (N)	2,610 mm	2,710 mm	Internal length with combi-door (L)	7,650 mm	7,680 mm	7,700 mm	7,750 mm		
Body height (BH)	1,350 mm	1,500 mm	1,650 mm	1,900 mm					
Loading capacity with chute (V)	24.0 m³	26.5 m³	29.1 m³	33.6 m³	Front overhang with body only (E)	805 mm	805 mm	805 mm	895 mm
Loading capacity with external pendulum tailgate 20° (V)	24.4 m³	27.2 m³	29.9 m³	34.5 m³	Front overhang with roller tarpaulin and platform (F)	1,290 mm	1,290 mm	1,290 mm	1,390 mm
Loading capacity with external pendulum tailgate 90° (V)				35.7 m³	Front overhang with sliding tarpaulin (F)	1,145 mm	1,200 mm	1,255 mm	1,360 mm
Loading capacity with combi-door (V)	24.9 m³	27.8 m³	30.7 m³	35.7 m³	Max. tipping angle	48 degrees	48 degrees	48 degrees	48 degrees
Overall height, unladen, horizontal, without roof cover (HA)	3,040 mm	3,190 mm	3,340 mm	3,590 mm	Height from fifth wheel to body floor (C)	370 mm	370 mm	370 mm	370 mm
					Centre of rear axle to rear edge of body/chute	1,410 mm	1,410 mm	1,410 mm	1,410 mm

SCHMITZ CARGOBULL 
The Trailer Company.

One-Stop Solution

Premium Services from Schmitz Cargobull



S.KI 7.2 Tipper Trailer with an Aluminium Box Body

Stable Lightweight Design for Long-Term Usage

The Benefits at a Glance:

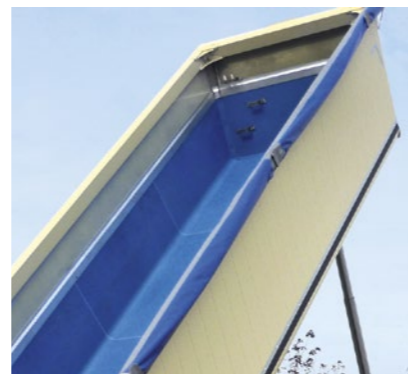
- Higher payload, unladen trailer weight from 4.8 t
- Longer body service life due to aluminium box construction
- Lightweight aluminium box body with different floor plate thicknesses to choose from. Optional: additional wear protection kit for the rear of the body
- Lightweight, robust steel chassis with a long service life
- 500,000 km or three-year running gear warranty
- ROTOS running gear with axle from Schmitz Cargobull, well suited to off-road operation
- Wide range of equipment variants and options



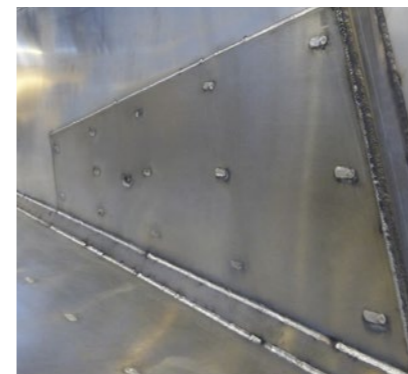
External pendulum tailgate suitable for partial unloading. Optionally with grain slider.



Combi-door with pendulum and door function. Optionally with grain slider.



Plastic coating protects against wear, offers good slippage and reduces the risk of freezing onto the body.



Wear plates optimise the durability of the rear part of the body.



Working platform with slip resistant floor on the tipping trough bulkhead. Including trough boarding aid and parking position for the hydraulic hose.



Sliding tarpaulin from Schmitz Cargobull saves time during opening and closing. Available in either a manual or electric version.

S.KI 7.2 Tipper Trailer with an Aluminium Box Body

Lightweight Alternative for the Tough Daily Routine on Construction Sites

- Aluminium box body made of high-quality Schmitz Cargobull system profiles
- Weight-optimised LIGHT chassis frame for greater payload
- Wide-ranging modular system with numerous options for a tailor-made transport solution
- Reliable transportation of fine-grained materials with an outstandingly low total cost of ownership



S.KI Control app allows key functions of the trailer to be controlled via a smartphone or tablet.



LED tail lights with dynamic turn signals are highly reliable and energy-efficient.



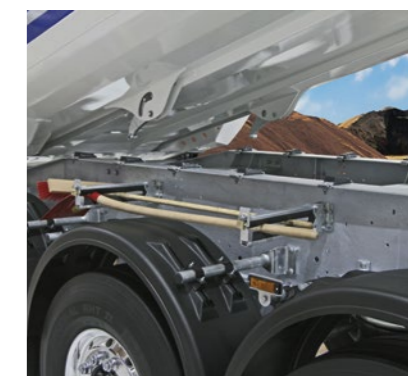
Folding underride guard with high ground clearance for use with a road paver.



Design with thermal insulation for transporting asphalt.



ROTOS running gears incorporate high-quality components from well-known manufacturers. With MRH pneumatic suspension: ideal for lowering the centre of gravity when unloading.



Hot galvanised steel chassis as a solid basis with the best possible value retention. LIGHT design available.