



The Trailer Company.



S.KI SMART PLUS

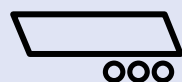
The SMART PLUS Package for the S.KI Tipper Semi-Trailer

The Benefits at a Glance:

- Robust, weight-optimised Extra-LIGHT-chassis
- LED light package comprising four reversing lights
- Tyre specific brake pad wear indicator+**
- Tyre pressure control system – higher safety and reliability
- Telematics hardware TrailerConnect® and TrailerConnect® telematics service
- Full Service trailer
- Full Service tyres (deliberate damage covered)
- Competitive financing, covering all benefits in one monthly instalment*
- Better value retention and reduced Total Cost of Ownership (TCO)
- The complete solution with comprehensive services for cost control, availability and retained value throughout the entire service life of the trailer

* Optional.

** Exact identification of the tyre with a worn brake pad.



Trailer: individual, customised trailers, manufactured in series production with modular components for payload-optimised tipper trailers. Chassis, running gear and body, designed for low maintenance, high load capacity and retained value, provide the basis for a long-term return on your investment.



Equipment: Weight-optimised equipment with an Extra-LIGHT-chassis, an LED light system / package with reversing lights for an improved view. Trailer telematics, brake pad wear indicator+** and tyre pressure monitoring further maximise availability and minimise costs at the same time. Avoid wear and downtime arising from damage.



Full Service trailer: covers maintenance and service costs, replacement of all wear parts on the trailer (hydraulics and body optional) at over 1,700 Service Partners, Europe-wide breakdown service with payment guarantee and processing by Schmitz Cargobull. The contract comes with unlimited mileage.



Full Service tyres: new tyres from premium brands to match your specific needs, for use on roads or construction sites, with more than 2,500 Service Partners in Europe. Includes a Europe-wide breakdown service with payment guarantee and processing via Schmitz Cargobull. The SMART PLUS package fully covers all replacement costs for worn tyres and flat tyres.



Trailer telematics: rapid access to the TrailerConnect® telematics service including a digital map (Google Maps), due to pre-installed hardware CTU3. The integrated WLAN allows the access to all of the telematics data at any time via the beSmart App.



Financing*: Competitive monthly rates, including all service components that take into account the improved retained value of the trailer. Tailored contracts with customised terms and winter payment break* on request.

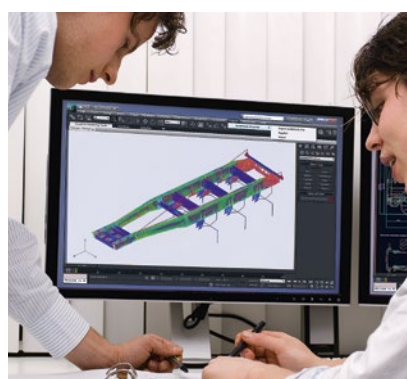
Reliable Coverage

Your One-Stop Complete Solution with SMART PLUS Package

Standard equipment in conjunction with Schmitz Cargobull's comprehensive services make the S.KI 24 SL tipper semi-trailers with the SMART PLUS package the perfect transport solution to meet your needs. A customised financing from industry experts is also available on request.



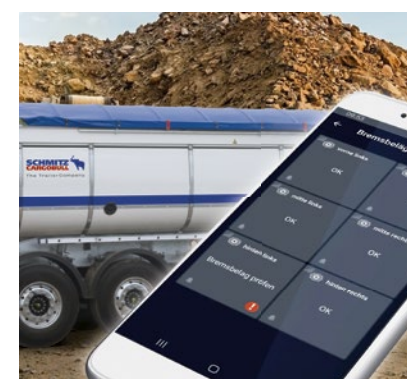
LED light package: LED tail lights plus four reversing lights at the rear and at both sides above the running gear.



Extra-LIGHT-chassis: FEM-designed for maximum torsional rigidity and safety while maximising the payload.



Tyre pressure monitoring system: decreases tyre wear, lowers fuel costs and reduces the risk of breakdown.



Brake pad wear indicator+: The new BBVA+ specifically identifies the tyre with a worn brake pad.



Full Service trailer and tyres: highest-quality service, improved value retention, reliable cost planning and reduced administrative overheads.



Transparent information: through TrailerConnect® data services for location, safety and equipment monitoring.

beSmart

Your new Trailer&Cargo Manager

The beSmart app lets your drivers continuously monitor the status of the trailer and respond rapidly if they need to. An integrated WLAN module in your trailer provides communication between the telematics control unit and a smartphone with push notifications. You'll never again miss important news or messages.



Find out more at:
www.cargobull-telematics.com



One-Stop Solution

Premium Services from
 Schmitz Cargobull



Tailored financing solutions and insurance from the industry expert



Second-hand – first-class
 Certified-quality used trailers



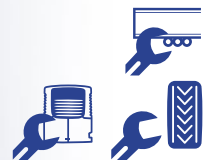
1,700 Service Partners –
 your specialist workshop for Full Service



TrailerConnect® telematics for smart logistics and fleet management



Original spare parts available in 24h, order online with the EPOS portal



Full Service for the trailer, cooling unit and tyres



24h Cargobull Euroservice Europe-wide breakdown service