



The TrailerConnect® telematics data services and functions

Transparency and efficiency in the fleet

The world of transport is becoming increasingly digital. A large amount of data is being generated that you need to manage efficiently and securely. TrailerConnect® telematics provides you with all the information you need about your vehicles. The TrailerConnect® portal and mobile applications allow you to view, analyse and, if necessary, share the telematics data of your entire fleet – across manufacturers.

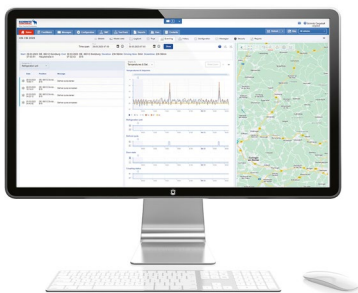
All telematics data from leading manufacturers in one portal.

The TrailerConnect® portal allows you to centrally manage all the digital data of your fleet - across manufacturers - on one platform. This enables efficient data management, optimisation of work processes and increases the availability and utilisation of your trailers.



Full transparency thanks to real-time data and intelligent fleet control

TrailerConnect® telematics provides you with reliable real-time data for greater transparency and efficiency in the supply chain. You have an overview of your fleet, allowing you to plan ahead and react proactively.



Increased uptime through forward planning of trailer and cooling unit

With **TrailerConnect® telematics**, you maximise trailer availability through early wear information and prevent breakdowns. Real-time monitoring, fleet information and alarm functions ensure safe transport and timely notifications in the event of deviations.

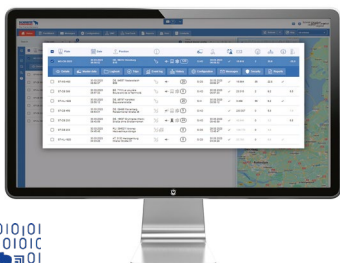


Everything in view even when travelling

The **beUpToDate app** allows dispatchers to view important information about the fleet at any time. The **beSmart app** allows drivers to keep an eye on the status of the trailer at all times and react quickly if necessary.

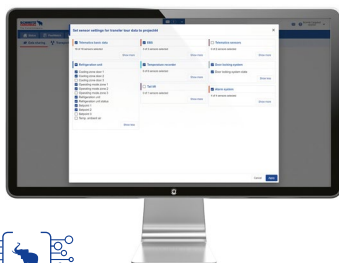
Reduce operating costs and increase efficiency.

The consolidated visualisation of all telematics data creates real transparency along the supply chain. The controlled exchange of data with third parties ensures greater security and efficiency in your day-to-day transport operations.



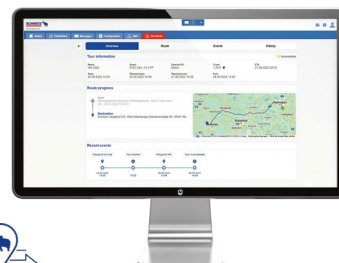
Real-time fleet visualisation with TrailerConnect® FleetTrack

Real-time position and availability of the trailers, independent of the telematics hardware. Overview dashboard for a permanent, all-encompassing overview and automated reporting.



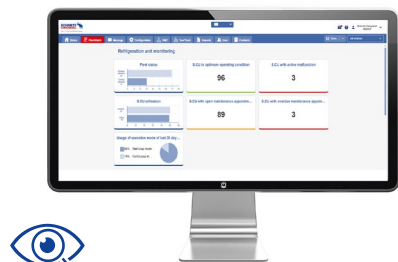
Centralised integration of various systems via TrailerConnect® Data Management Center

Consolidation of many telematics systems and data on one platform. Individualised and secure transfer of your data - for maximum control and transparency.



Track tours on order and share transport data with TrailerConnect® TourTrack

Targeted and selected data forwarding for each tour. Tour-based real-time monitoring including expected arrival time and automatic creation of order-related temperature reports.



Real-time monitoring of the cooling unit and trailer with TrailerConnect® FleetWatch

With the dashboard, you can keep an eye on the condition and maintenance requirements of your fleet, plan early maintenance and avoid damage to goods. Problems are identified early and concrete recommendations for action are made.



Proactive monitoring for trailer & cooling unit S.C.U

With proactive monitoring, you will be able to keep an eye on the availability of the trailer and cooling unit S.C.U at any time (24/7) and will be informed early about problems and receive recommendations for action. Repair and maintenance requirements are recorded in the digital vehicle file.



Predictive maintenance for the S.C.U cooling unit in the future

Predictive maintenance recognises faults that are likely to occur in the future in advance and makes specific predictions about possible repair and maintenance requirements. Failures are avoided thanks to early warnings.

TrailerConnect® as a multi-device application

The mobile applications for drivers and fleet managers provide digital access to all relevant telematics data, so that all information is available at any time and at a glance.

The beUpToDate app

for dispatchers and fleet managers

With the **beUpToDate app**, fleet managers and operators have their fleet in sight at any time. Location, stand-time and motion data are displayed on the smartphone. Notifications and alarms come directly to the smartphone so they can act quickly.



The beSmart app

for drivers

With the **beSmart app**, drivers can always keep an eye on the trailer condition and react quickly. Various functions of the trailer can be controlled through the app. Push notifications inform about important events.



You can rely on:

The Schmitz Cargobull premium services and the competent partner network.

- Customised financing and insurance from industry professionals
- TrailerConnect® Telematics and Digital Services for Smart Logistics
- Second Hand – First Class Used in tested quality
- Spare parts that pay off, for the time value fair repair
- Full Service for trailer, cooling unit and tyres
- Order Genuine Spare Parts online, delivery within 24h
- 1,400 Service Partners - your specialist workshop network
- 24h Cargobull Euroservice assistance across Europe

Click or scan
Find out more about our exclusive services here.

Do you have any further questions for us?
We are happy to advise you!

T +49 (2558) 81-0
www.cargobull.com