



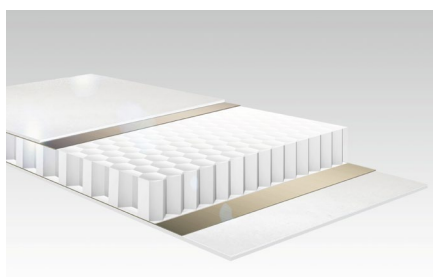
The dry freight semi-trailer S.BO PACE

More efficiency in courier, express and parcel services (CEP)

CEP transport must be fast, safe and environmentally friendly. With its lightweight yet robust STRUKTOPLAST® body, the S.BO PACE weighs around 700kg less than comparable vehicles with a plywood body. It can be used flexibly; and thanks to integrated TrailerConnect® telematics, operators have complete transparency.

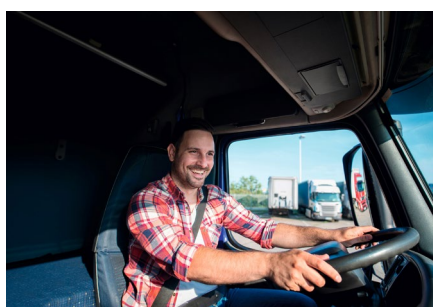
Why is the S.BO PACE perfect for you?

The S.BO PACE is strong and certified to DIN EN 12642 Code XL and offers a wide range of options. It is available with 2 or 3 axles, roller shutter or doors, light or aluminium roof with reinforcement, tail lift and numerous equipment options for securing the load.



Now with even more payload thanks to the innovative, stable lightweight body made of STRUKTOPLAST®

STRUKTOPLAST® body: Up to 50% lighter than the classic plywood version. Ideal for more payload or less diesel consumption.



More load volume, more safety, more efficiency

The usable interior height of 2,710mm offers a maximum load volume of over 92m³. The simplified load securing with load securing rails reliably protects the goods.



Save fuel through aerodynamic design

The S.BO PACE with aerodynamic EcoFIX body – with lowered rear, reduces air resistance, saves up to 3.5% fuel and reduces CO₂ emissions. For sustainable, economical CEP transport.

S.BO PACE: Fast, robust and always flexible.

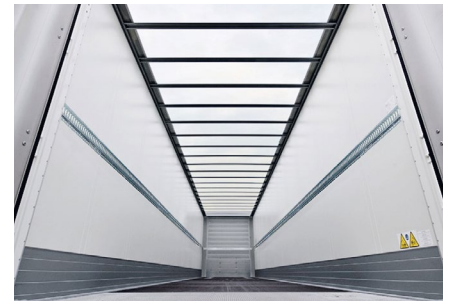
Reliability and innovation are the top priorities for all components in the dry freight semi-trailer S.BO PACE. This leads to a long service life and lasting value of the vehicle.



Robust heavy-duty base scuff plate to protect the sidewall and speed up the loading processes.





Robust screen-printed floor: The standard floor load capacity is 5.5t. The vehicle is also optionally available with a floor load capacity of 7.1t or 8.0t if heavier loads are being transported or industrial trucks are being carried.



Light roof for CEP services: Continuous lighting with daylight or additionally with LED interior lighting in full body length.

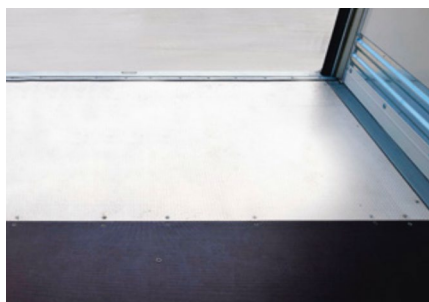


Click or scan
For detailed
information on
the equipment



New generation, galvanised, rolled MODULOS chassis – easy to maintain with a 10-year warranty against rusting through.



Floor plates on the rear portal protect the last floor plate from increased wear due to frequent loading with a forklift truck and extend the service life.



ROTOS axle unit with 1,000,000km or 6-year warranty (excluding wearing parts).

CEP transport – customised and well thought-out.

As a strong partner for your success, we provide you with transport solutions and services you can rely on, for greater economy, efficiency and transparency in your fleet and along the supply chain.



Ex works in every **S.BO PACE**

TrailerConnect® telematics provides you with real-time data for greater transparency and efficiency in your fleet and supply chain.

With **Proactive Monitoring** for trailers, you can plan maintenance appointments in advance and ensure maximum uptime.

The **TrailerConnect® tyre pressure monitoring system** with **autolocation** assigns the integrated sensor to the correct tyre position in each case. The sensor learns independently and records tyre pressure and tyre temperature data.

This means efficient fleet management, intelligent scheduling, higher trailer availability and effective processes.

Service contracts

Increase your uptime, create cost transparency and reduce your workload with **service contracts*** for trailer and tyres.

You can rely on:

The Schmitz Cargobull premium services and the competent partner network.

The infographic features a central image of a highway interchange at night with light trails. Overlaid on this are several circular icons connected by a network of lines. Each icon represents a service: a Euro symbol for financing, a satellite for telematics, a truck for spare parts, a hand holding a card for full service, a box for 24h spare parts, a wrench for workshop network, a truck for 24h assistance, and a truck with a checkmark for second-hand quality.

- Customised financing and insurance from industry professionals
- Second Hand – First Class Used in tested quality
- TrailerConnect® Telematics and Digital Services for Smart Logistics
- Spare parts that pay off, for the time value fair repair
- Full Service for trailer, cooling unit and tyres
- Order Genuine Spare Parts online, delivery within 24h
- 1,400 Service Partners - your specialist workshop network
- 24h Cargobull Euroservice assistance across Europe

Click or scan
Find out more about our exclusive services here.

Do you have any further questions for us?
We are happy to advise you!

T +49 (2558) 81-0
www.cargobull.com

*All expandable with the Smart Service Package for digital services or modules, e.g. „National Service“