

TrailerConnect[®] telematics

The intelligent solution for transparent and efficient transport processes

Digital into the future

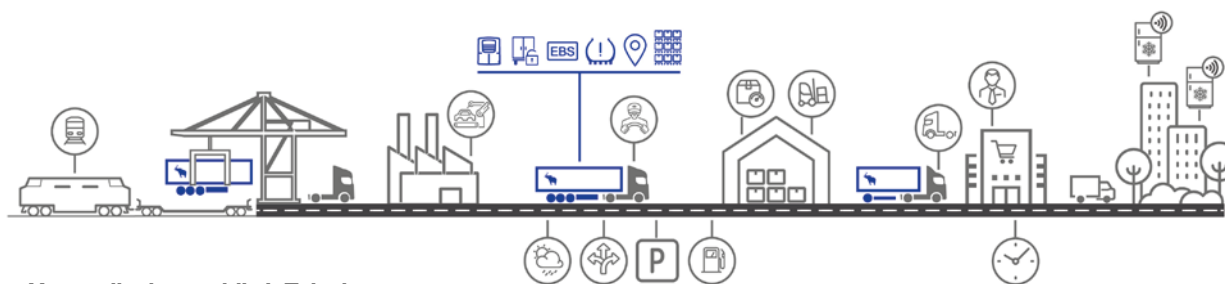
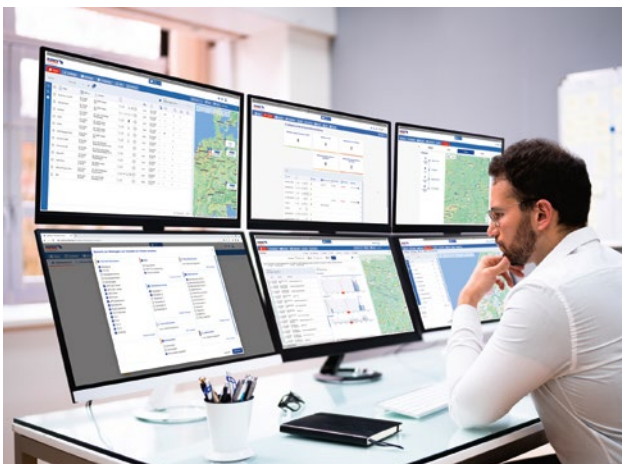
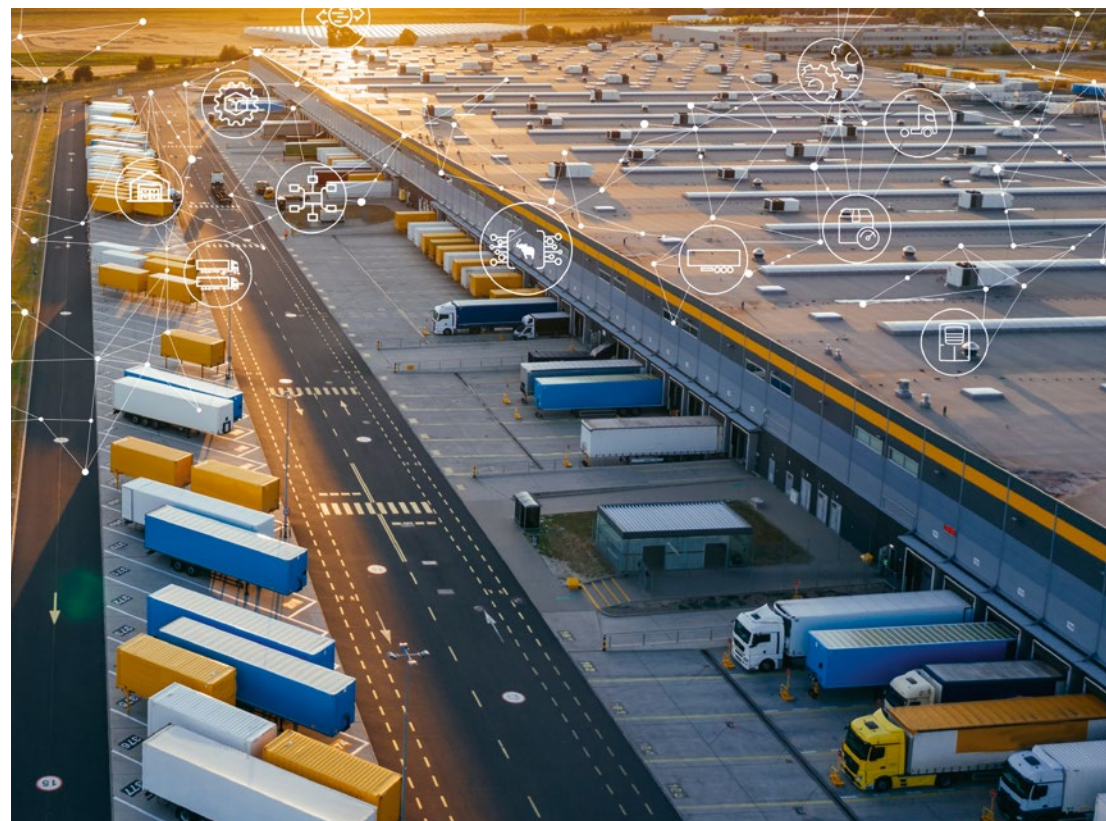
Trailer telematics makes it easy

The future of the transport industry is digitalisation. Even today, huge amounts of data are generated in logistics. At the same time, the transport industry is highly fragmented and many process partners must be securely and reliably integrated into the information chains.

Schmitz Cargobull consistently focuses on telematics as the standard in trailers: Our advantage is real-time information about trailers and freight from a secure system that you receive ex works from Schmitz Cargobull.

All trailer telematics data from leading manufacturers and suppliers in one portal. The TrailerConnect® portal as a consolidation platform makes it possible. It displays your entire trailer fleet and integrates data from other telematics providers. You combine and manage the data of your fleet on a single platform, simply and clearly.

The advantages are obvious: you use a central platform and increase the security of your processes. The consolidated presentation in one portal creates real transparency and increases your efficiency. By using only a few applications, you reduce your operating costs. You reduce the training effort for you and your employees and have one contact person for questions.



Your trailer is a mobile IoT device

Data is generated everywhere in the logistics process, providing more transparency in the supply chain. The trailer is also part of the "Internet of Things" (IoT) and provides valuable information that is necessary for you and your partners to optimise and accelerate processes.



TrailerConnect® Portal

The platform for data integration, live tracking & trailer services

After logging in, you can see and manage your fleet's transport data at a glance and have access to further functions. You configure the data exchange with third parties in the TrailerConnect® Data Management Center and start route planning and management in TrailerConnect® TourTrack. If required, you can also monitor the status of your trailer fleet, compliance with the cold chain for temperature-controlled transport and transport according to specific safety standards in the portal.



TrailerConnect®
DataManagementCenter

TrailerConnect® Data Management Center Central integration of various systems

- Infrastructure and consolidation platform for all telematics systems and data
- Individual and secure configuration of data streams
- Visualisation of the entire transport network - incl. subcontractors

Page 4



TrailerConnect® TourTrack Order-related tracking of vehicles and sharing of transport data

- Controlled and selected data transfer for each route, e.g. to any real-time visibility platform (RTV).
- Route-based real-time monitoring, including estimated time of arrival (ETA)
- Automatic generation of order-related temperature reports

Page 6



TrailerConnect® FleetTrack Fleet visualisation in real time

- Real-time display of truck & trailer position and availability - independent of the telematics hardware used
- Wide-ranging notification and alarm configuration
- Personal reporting and history of all events, positions and temperatures

Page 7



TrailerConnect® FleetWatch Real-time monitoring of the cooling unit

- Real-time fleet dashboard for monitoring refrigeration units in transport
- Automatic error analysis with recommendations for corrective action
- Mediation of service partners in the event of a breakdown

Page 7

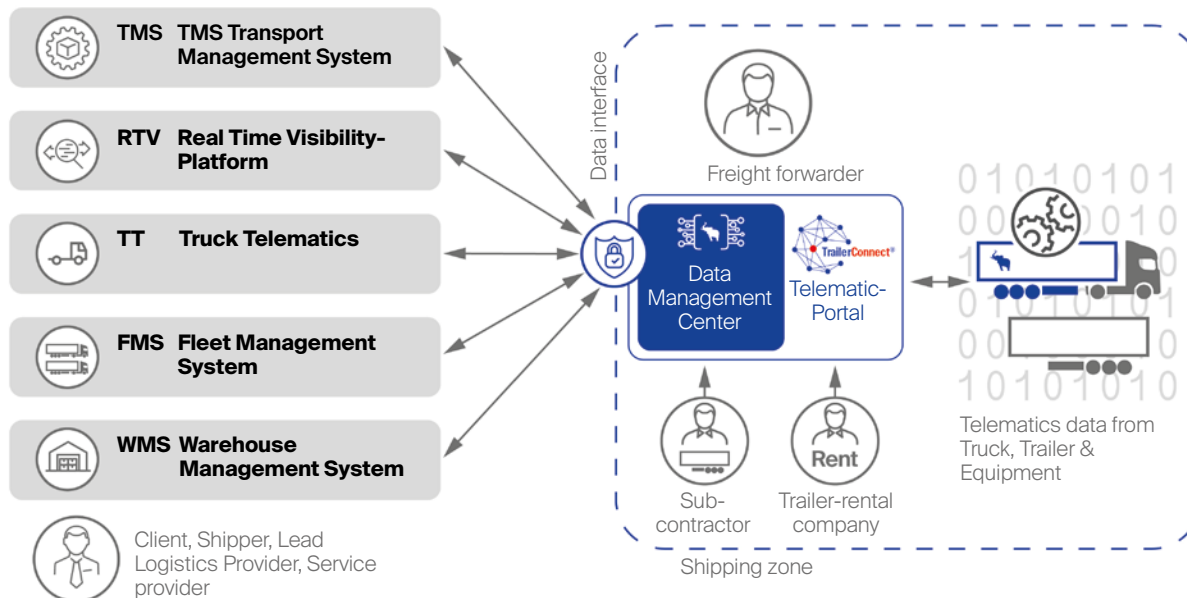


TrailerConnect® Data Management Center

Connect process stakeholders and share data securely

Making transport data available in real-time on different platforms is the prerequisite for a transparent supply chain. In the TrailerConnect® Data Management Center, you manage your transport data in one central location. If required, you can exchange the data selectively and in a controlled manner with third-party systems such as telematics web portals, transport management systems (TMS) or real time visibility platforms (RTV).

With the TrailerConnect® Data Management Center, you can quickly set up a network with subcontractors, clients and third-party systems for your freight forwarding company without any IT knowledge. Telematics data (also from other providers) is integrated, transport data is consolidated and a central platform is created for all information relating to your fleet and the transport of goods. You retain full control over your transport data and decide who can see what and when.



The TrailerConnect® Data Management Center is the basis for your digital business

- **Numerous interfaces:** Connection to telematics systems, real-time visibility platforms, transport management systems, fleet management systems and other information systems
- **Integration and protection of your transport network:** Automatic onboarding of subcontractors as well as controlled transmission and control of transport orders
- **Route-based transmission:** Share transport data with third parties on a route-based and, if desired, automated basis
- **Filter function:** Anonymisation of your own transport network and forwarding of selected, order-related data to third parties



For more information on the TrailerConnect® Data Management Center, please visit our TrailerConnect® pages on the internet



Secure networking made easy

This is how you create your data safe zone with the TrailerConnect® Data Management Center:



You have complete control

- You selectively connect to your clients' real-time visibility (RTV) platforms and other external systems and choose which data to share
- Connect to all relevant platforms - immediately available without IT implementation



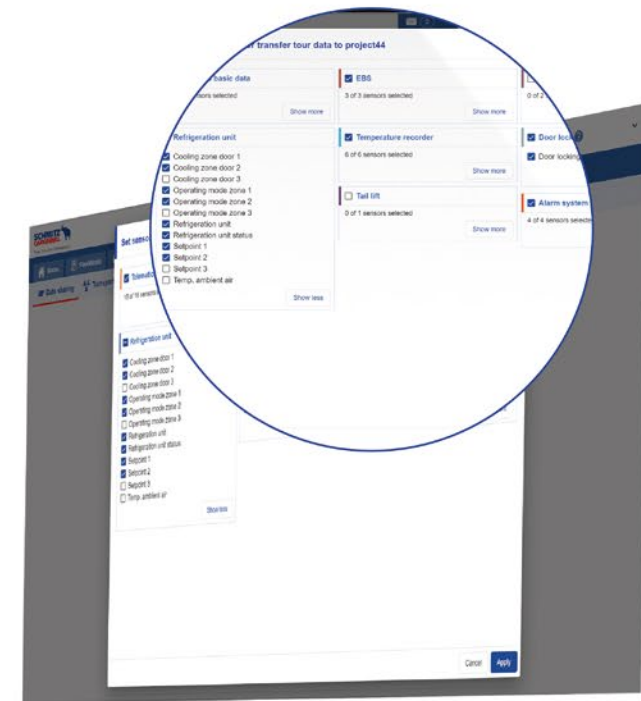
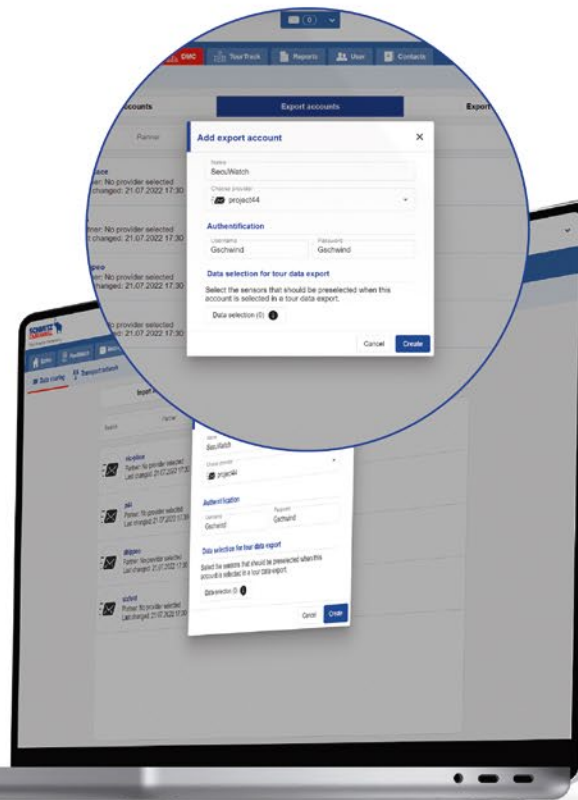
Invite your partners

- Select partners and subcontractors from existing list or invite new contacts
- Your transport network is anonymous to third parties
- Data connections are configured automatically



Controlled data transfer to your customers

- Configurable selection of the data to be transmitted
- Selection can be adapted to the order at any time





TrailerConnect® TourTrack

Create and monitor routes quickly and easily

With TrailerConnect® TourTrack, routes can be created quickly and easily or imported from transport management systems. You get an immediate and detailed overview of the status of your deliveries and routes and can track them. Unplanned deviations become immediately visible. This enables efficient "management by exception" and reduces calls from the dispatcher to the driver.



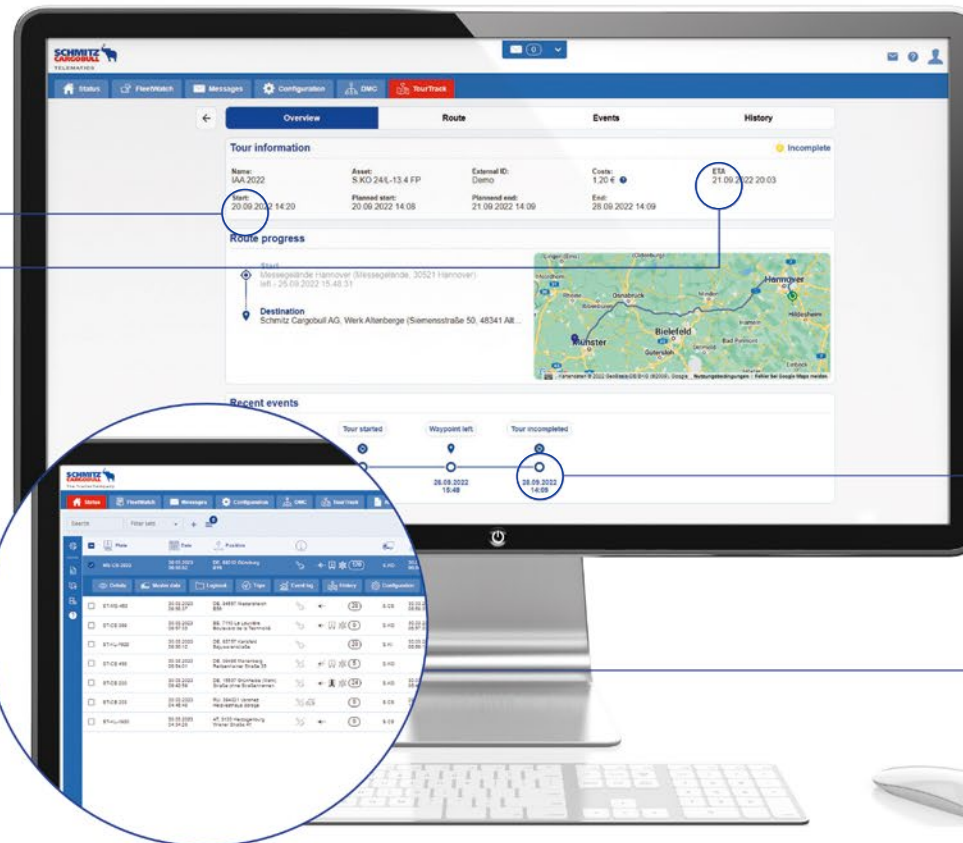
Ready to go with a few clicks

- Easy to use user interface for simple route planning
- Select route set or create new route
- Enter dates, times, start and destination points
- Select transport unit
- Set alarms, settings and setpoints
- Set up geofence zones



Status overview

- All important and latest trailer data at a glance
- Route monitoring in real-time incl. estimated time of arrival (ETA)
- Use of vehicle groups and filter sets for needs-based views



TourTrack management

- Evaluation of individual routes in a clear dashboard (event, temperature and position history)
- Easy transfer of data through export function
- Controlled data exchange for each route individually selectable



Cold chain management

- Automatically create order-related temperature reports
- Legally compliant documentation as proof of compliance with the cold chain
- Graphic display of the route with current position
- History of events



You can find more information about TrailerConnect® TourTrack on our TrailerConnect® pages on the internet



TrailerConnect® FleetTrack

Always keep an eye on your vehicle fleet

With TrailerConnect® FleetTrack you receive vehicle-related messages, evaluations and reports for your fleet and optimise trailer utilisation and maintenance. The alarm management informs you at an early stage about possible failures and increases trailer availability. You have all alarm messages at a glance and can intervene quickly if necessary.



Current fleet status at a glance

- Active temperature monitoring with alarm function in real time
- Detailed status overview and history of all events, temperatures and positions
- Display of truck and trailer position in real time - independent of the telematics system used
- Permanent information on door and coupling status



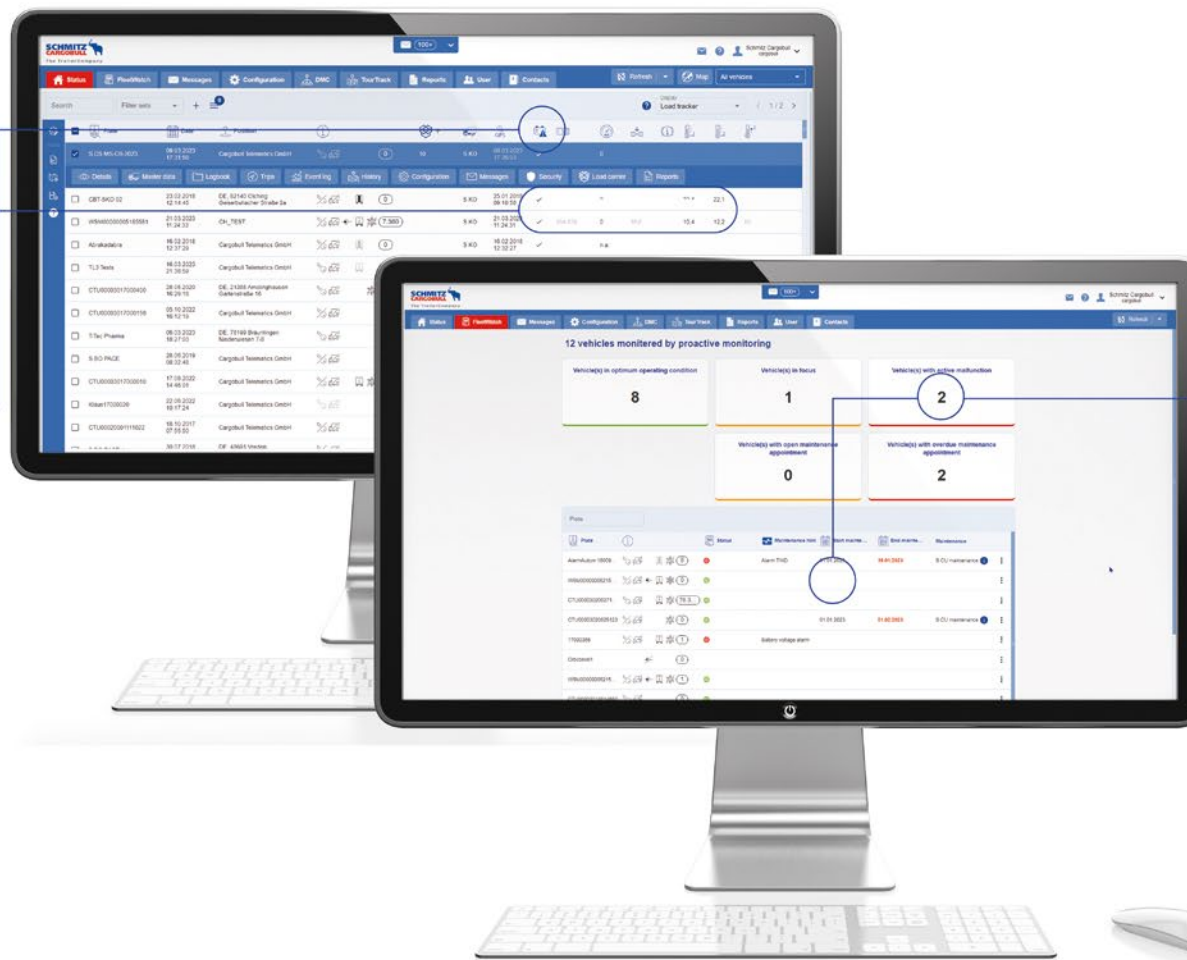
More trailer uptime

- Real-time alerts inform about service work at an early stage and ensure efficient fleet management
- Documentation of technical events with details of time and place of occurrence and rectification



Plan the next service in advance

- Service-relevant information on all networked trailer components (sensors, control and drive elements for cooling, drive and safety functions) is recorded chronologically



TrailerConnect® FleetWatch

Proactively monitor cooling units

With TrailerConnect® FleetWatch you can monitor the cooling units in your fleet clearly in real time. The automatic error analysis informs you at an early stage and provides recommendations for action so that you can intervene proactively. If necessary, you can quickly and easily contact the nearest service partner.



Predictive maintenance reduces costs with more uptime

- With Proactive Monitoring for S.CU cooling units, you always have an eye on the status and plan maintenance intervals and resources efficiently.
- With Predictive Maintenance, you receive notifications and recommendations on possible failures at an early stage, before they happen.



Your data stays available

- Data on cold chain, tours, events, technology of refrigeration unit and trailer are stored
- Data export in clearly structured reports
- Data storage > 12 months upon request



For more information on TrailerConnect® FleetTrack and TrailerConnect® FleetWatch, please visit our TrailerConnect® pages on the internet



Perfect for temperature-controlled freight

Reliably monitor refrigerated transport with TrailerConnect®

The challenges in temperature-controlled transport

Constant temperature: In temperature-controlled transport, the cold chain must be maintained throughout the entire transport and the temperature in the trailer must remain constant. The S.KO COOL semi-trailers with FERROPLAST® insulation and Schmitz Cargobull refrigeration machine are optimally matched to each other and reliably keep the temperature constant.

Detect temperature deviations early and intervene: TrailerConnect® telematics detects deviations in real time to ensure compliance with temperature requirements and protect sensitive goods. Warning messages enable the driver and dispatcher to take appropriate action in good time and protect the goods from spoilage.

Plan maintenance optimally: Failures in the refrigeration machine can lead to damage to the products being transported. With TrailerConnect® telematics and associated services, e.g. Predictive Maintenance ensure that maintenance is planned and carried out with foresight.

Compliance with regulations: Strict regulations and guidelines must be taken into account in temperature-controlled transport. Semi-trailers, transport conditions and reports must comply with specifications such as GDP (Good Distribution Practice) and the immediately available temperature reports according to DIN 12863. The right vehicle for the various requirements can be selected in the TrailerConnect® portal.



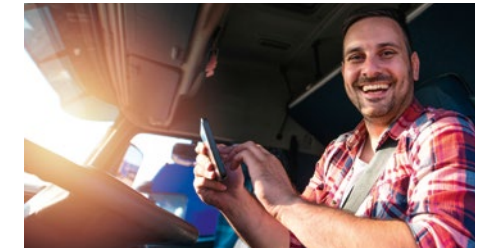
Advantages for the dispatcher

- All information at a glance
- Efficient planning of routes
- Remote access to refrigeration machine and trailer
- Transparent processes and tour monitoring, also of subcontractors used
- Fast reaction to events (e.g. correction of setpoints)
- Reliable compliance with the cold chain and optimum processes
- Transport data available at all times
- Automatic recording of the route from the start



Advantages for the fleet manager

- Fast and digital availability of documentation (e.g. temperature records)
- Optimal selection of the right vehicle and equipment (certificates, documents, reports)
- Central monitoring of transport orders in a clear manner on one platform
- Fast communication in case of questions



Advantages for the driver

- All information in one platform ensures efficient communication between driver and dispatcher
- Better concentration on transport thanks to presettings on the refrigeration unit and the rear door
- Timely warning of disruptions and impending breakdowns
- Avoidance of breakdowns
- Optimised route planning by determining the estimated time of arrival (ETA) and taking driving times into account

More information for the driver in the beSmart app (page 14)





Made for your daily life

In the TrailerConnect® portal, your transport data is clearly displayed and you have all the important information at a glance.



Reliably maintain the cold chain

- Two-way communication with the cooling unit
- Current cooling unit status in real time - even when the trailer is uncoupled
- Changing settings and setpoints on the cooling unit in the portal: e.g. switching on and off, predefined temperature sets and alarms



Legally compliant proof of compliance with the cold chain

- Digital temperature recorder integrated in the telematics control unit CTU Pro
- Creation of temperature reports (according to DIN 12863)
- Transmission via digital temperature recorder or temperature printer on the vehicle (optional)
- If required, portal access for clients to their data



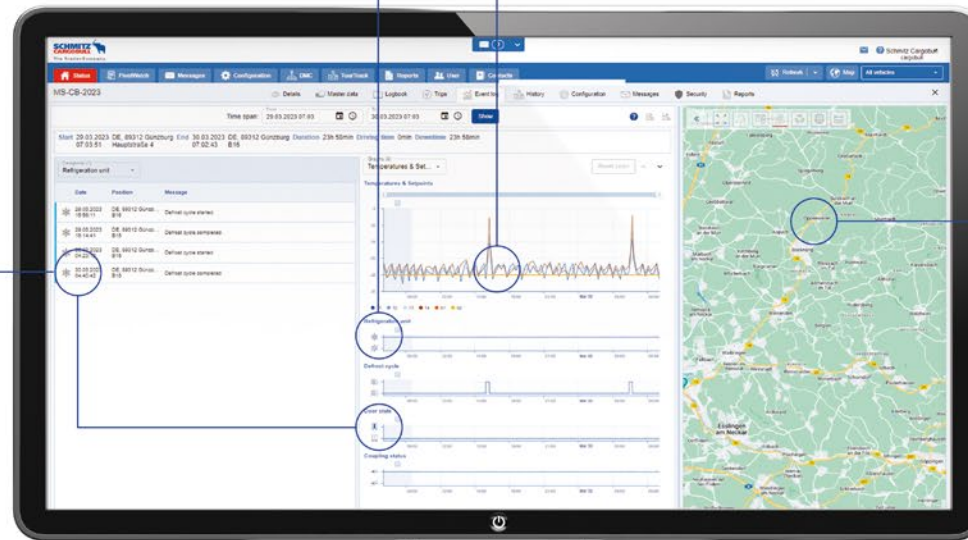
All routes and events at a glance

- Clear presentation in the portal as a map (Google Maps), graphic or list
- Current status of route or fleet
- Summary of histories
- Individual setting of alarms and setpoints



Protect the cargo from unauthorised access

- Door locking system on the trailer PIN-secured
- Central control of the door locking system in the portal
- Access to freight only in defined zones with geofences
- Alarm informs in case of unauthorised door opening



TrailerConnect® Data Management Center (DMC) and TrailerConnect® TourTrack are the basis for your transport control

- Secure and controlled data exchange with customers and shippers
- Integrated subcontractor network displayed anonymously
- Individual configuration of each route with automated route start, current status messages and ETA determination

More about DMC and TourTrack on pages 4 to 6.



Cooling unit runtime at a glance

- Monitoring the level of the refrigeration machine in the portal with a tank sensor for diesel-powered refrigeration machines and a battery monitor for electric refrigeration machines
- Alarm in time, before failure is imminent



You can find more information about the functions and options in refrigerated transport on our TrailerConnect® pages on the internet



Certified security

Monitored pharmaceutical transport

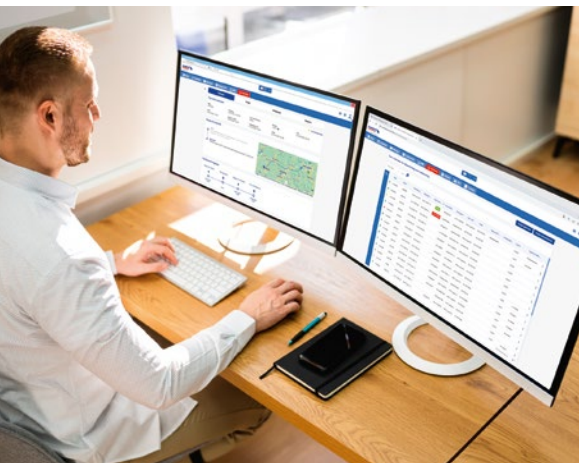
Strict rules and guidelines apply in pharmaceutical transport, which must be observed and proven. The safety of the goods must be guaranteed and the transport reliably monitored.

TAPA* TSR1-capable S.KO COOL reefer semi-trailer: All safety components for TAPA* TSR1 certification are optimally coordinated ex works. The trailer is equipped with an acoustic alarm system and Body Protect alarm system in the body. Other features include coupling sensor and solar panel for the CTU transport refrigeration unit and optional immobiliser. Door locking system TL4 and door contact sensors secure access at the rear. In the TrailerConnect® portal, the TAPA* mode with sabotage function ensures intelligent monitoring of the trailer.

The Transported Asset Protection Association (TAPA) is an industry association consisting of manufacturers, logistics service providers, freight companies and law enforcement agencies that uses proven methods and procedures to increase the transport security of high-value goods worldwide. The aim is to reduce losses in the supply chain. The S.KO COOL reefer meet the highest requirement level according to TAPA* with the standards according to TSR1.



100 % SMART: Telematics control unit installed ex works



Advantages for the dispatcher

- Compliance with regulations through certified components and telematics modes
- Real-time monitoring to intervene immediately if necessary
- Increased cargo security through the TAPA* standard and temperature monitoring through pharmaceutical certification
- Reduced risk of cargo theft and cargo damage



Advantages for the fleet manager

- Improved transparency in the supply chain
- Compliance with insurance requirements for the transport of sensitive cargo



Advantages for the driver

- More security for the cargo through certified security technology and handling routines
- Support for increased responsibility in the execution of security transports
- Reduced risk of cargo damage due to safety equipment
- TAPA status is also displayed in the beSmart app

More information for the driver in the beSmart app (page 14)



* TAPA = Transported Asset Protection Association

You drive better with security

With just a few settings, you can configure your safety transport in the TrailerConnect® portal and keep the sensitive temperature control under control even from your desk.



Full control over the cargo

- In TAPA mode you control the door locking system with additional options and start monitoring the route
- Geofence-based locking of the door locking system
- Door locking system on the trailer remains PIN-secured in TAPA mode
- With the sabotage functions, you configure the security devices on the trailer



Solar panel and battery monitor for longer runtime of cooling unit and TAPA mode

- Solar panel doubles battery life for cooling unit and telematics control even in remote units
- Solar panel doubles battery life for cooling unit and telematics control even in remote units



Reliably maintaining the cold chain

- Monitoring of up to two temperature zones in the cargo area with pharma-certified temperature sensors
- Setting of predefined CargoSets for simplified temperature control
- Correction of temperature control also online



All routes and events immediately at a glance

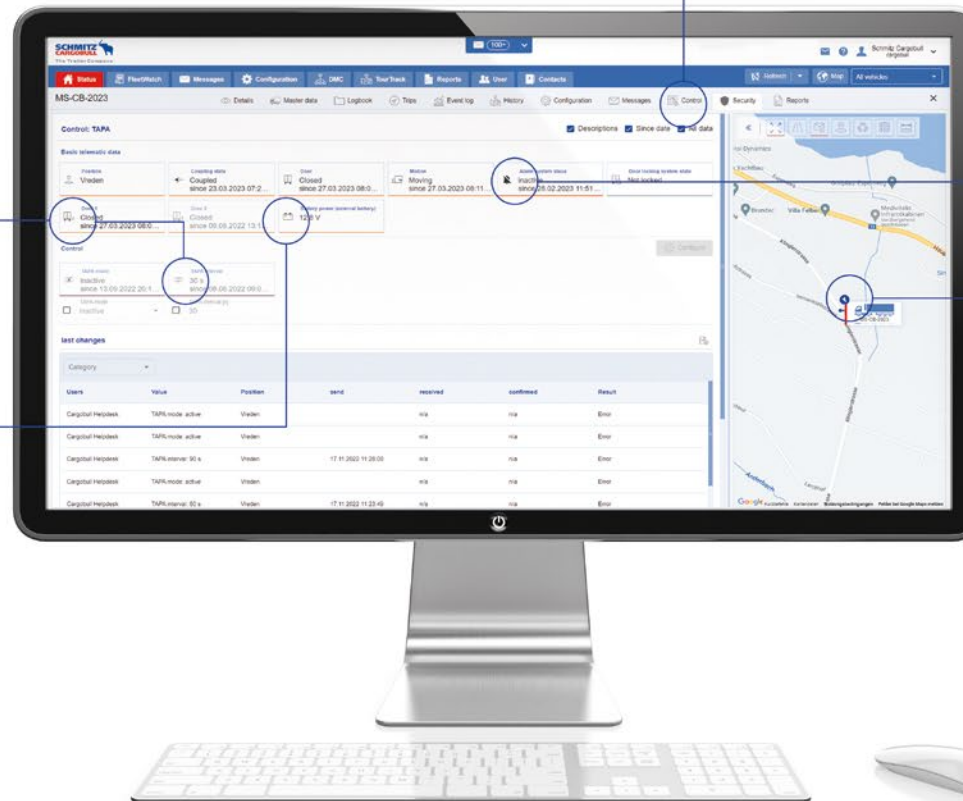
- Clear presentation in the portal on map (Google Maps), graphic or list
- Current status of route or fleet
- Summary of histories
- Shortened reporting interval to up to 30 seconds
- Individual setting of alarm and setpoints



TrailerConnect® Data Management Center (DMC) and TrailerConnect® TourTrack are at the beginning of your planning.

- The conditions for the transport of temperature-controlled freight also apply in full here
- Safety-relevant information can also be automatically forwarded to external TAPA* control centres

Detailed information on DMC and TourTrack on pages 4 to 6.



For more information on the functions in TAPA mode, see the information on the safety trailer on the internet



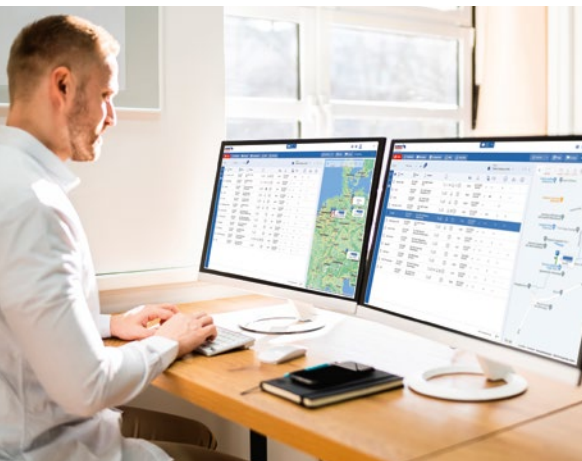
Just-in-time without stress

Delivering on time with TrailerConnect®

Just-in-time: When goods have to arrive at exactly the right time, in the right quantity, at exactly the right place.

Reliable arrival times (ETA) are essential in scheduled transport.

Permanent trailer monitoring with telematics ensures maximum trailer availability. It supports proactive trailer maintenance, reduces wear and tear and allows optimised route planning including the necessary maintenance dates.



Advantages for the dispatcher

- Better planning and forward-looking action thanks to real-time transport data
- More transparency for all parties involved
- Efficient processes
- Alarm messages in case of unforeseen events
- The customer receives automatic status information on his freight order



Advantages for the fleet manager

- Efficient processes and perfect quality of goods
- Monitoring of fleet transport orders in a central view
- Efficient utilisation of the trailer fleet and reduced costs through forward planning
- Clearly structured reports on fleet usage simplify planning
- Fast communication in case of questions



Advantages for the driver

- Early notification of possible breakdowns in the beSmart app
- All important information always at hand

More information for the driver in the beSmart app (page 14)



Customer satisfaction included

Plan and monitor just-in-time transports centrally in the TrailerConnect® portal.



Reducing fuel and CO2

- Eco sensor monitors the roof position of the rear of the aerodynamic trailers S.CS EcoFLEX and S.CS EcoVARIOS for fuel efficient transport
- Sensor position is displayed in the TrailerConnect® portal and in the beSmart driver app



Monitor the load in the trailer

- Active bluetooth responders on load carriers inform about the current location of the goods
- Sensors in the trailers report the tracked load carriers to the TrailerConnect® portal
- Use free cargo space efficiently and avoid incorrect deliveries



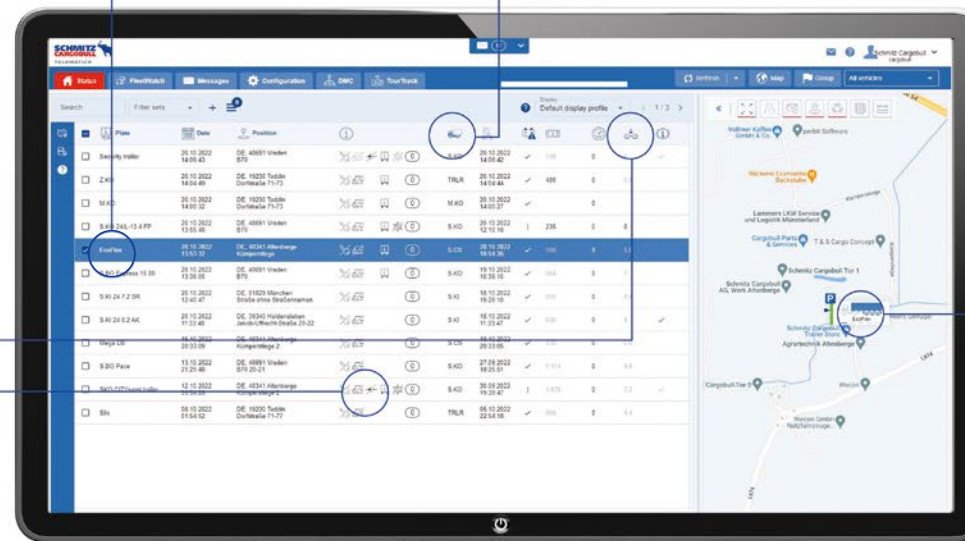
Plan in advance, keep to deadlines

- Monitor tyre pressure and trailer for more trailer uptime and just-in-time deliveries
- Plan workshop appointments in advance for optimal route planning and efficient fleet deployment
- Proactive maintenance saves costs



Safe on the road in swap transport

- Ensure the correct combination with truck identification and coupling status.
- PIN-protected immobiliser prevents misuse and theft
- The vehicle is only moved by authorised persons



Optimise tours, transmit transport data securely to third parties

- Transfer real-time data on tour status and arrival time via TrailerConnect® Data Management Center (DMC) to the client's real-time visibility systems.
- Route planning with automated functions, e.g. automatic route start with geofence in TrailerConnect® TourTrack

Detailed information on DMC and TourTrack on pages 4 to 6.



For more information on the functions and options for just-in-time transports, please visit our TrailerConnect® pages on the internet



Up to date even when mobile

The apps for TrailerConnect®

Mobile apps for drivers and fleet managers

Our apps offer you the possibility to get comprehensive information and to take action if necessary, even when you are on the move.

beSmart App

Driver app for more safety on every route

With the beSmart app, drivers always have an overview of the trailer's condition and can react quickly if necessary.



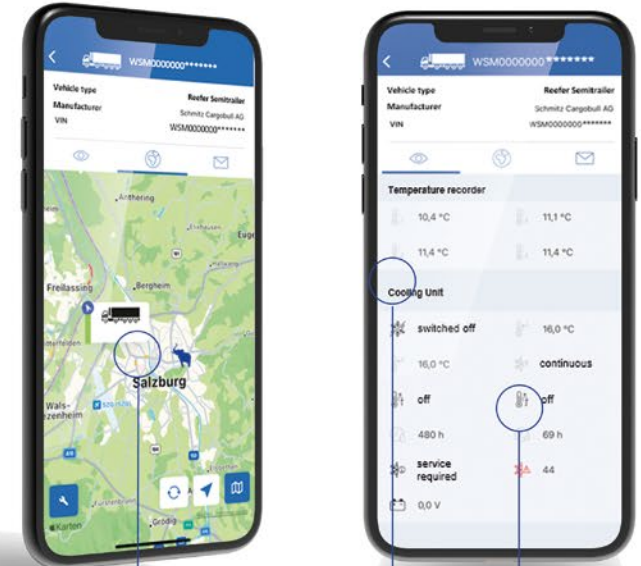
Mobile control of refrigerated transports

- Cargo hold temperature analysis: Monitor temperature trends on the smartphone and create a digital temperature report
- Monitoring and control of the refrigeration machine: Operating data at a glance with messages in case of deviations

beUpToDate App

Always informed on the move

With the beUpToDate app, managers can keep an eye on their fleet at all times.



beSMART



Download on the App Store



App in 23 languages available

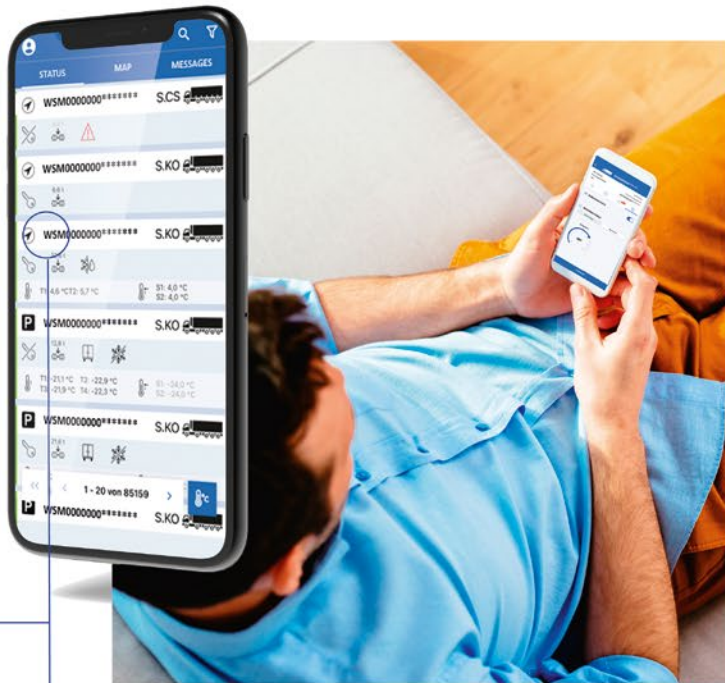


GET IT ON Google Play



Trailer and transport at a glance

- Brake pad wear check and tyre status check: avoid breakdowns and plan workshop visits with foresight
- Display aggregate load and avoid overloading
- Activate/deactivate immobiliser
- Activate/deactivate alarm system
- Rear door locking system: lock and unlock rear doors by entering a PIN on your smartphone
- Create and share digital temperature reports in the app
- Real-time status updates




Mobile fleet and vehicle monitoring

- Information on the condition of vehicle components such as tyre pressure, wear and load per vehicle
- Mobile configuration of cooling unit: Full control over the cooling unit thanks to mobile setpoint adjustment and monitoring of the temperatures in the passenger compartment
- Messages and alarms directly to your smartphone so you can act quickly
- Integrated service partner search: Find the nearest workshop directly from your smartphone



beUpToDate



 App available in 22 languages

Support und training

We offer you the complete package. In addition to high-quality hardware and intelligent telematics services, we support you with **support and training**. We accompany the set-up of TrailerConnect® for your company, train your employees, offer customer workshops on your premises, integrate data into your system and are **your contact throughout the entire service life** of the trailer telematics services. If you have any questions, our **toll-free 1st-3rd level support** will assist you. You get fast help from competent contact partners for all aspects of trailer telematics with a differentiated error analysis for both hardware and software installation and use.

If you want to **retrofit our telematics solution**, our Europe-wide service partner network of trained specialist workshops will help you.

If you wish, we can also **train your own workshop** on the subject of TrailerConnect®.



Online trainings for all

TrailerConnect® customers can take part in our **Telematics Portal webinars** in six different languages (German, English, Spanish, Dutch, Italian and Polish) at any time.

The topics of the online training are "Basics", "Map and Geofencing", "Vehicle Configuration", "Reporting", "Push API" and "Hire Company / Shipper". They last 30 to 45 minutes each and can be booked via **helpdesk.trailerconnect@cargobull.com**.

Cargobull Telematics GmbH

Wilhelm-Schickard Straße 4
D-48149 Münster

Phone +49 2558 81-5858
Fax +49 2558 81-5859
www.cargobull.com

SCHMITZ CARGOBULL



The Trailer Company.



Find out more at:
www.cargobull.com



Schmitz Cargobull AG · Bahnhofstraße 22 · D-48612 Horstmar · Phone +49 2558 81-0 · Fax+49 2558 81-500 · www.cargobull.com

We reserve the right to make changes. Some illustrations show special equipment.

CBT-BRO-DEGB-10641-1623